

CHARM ARTIST COLLECTIVE
LAS VEGAS HALTER TOP

Sizes 2-20
 with cup sizes A-H

5/8 inch (1.5 cm) seam allowances are included on all pattern pieces.

PAGE 1 OF 2

PATTERN PIECE INDEX

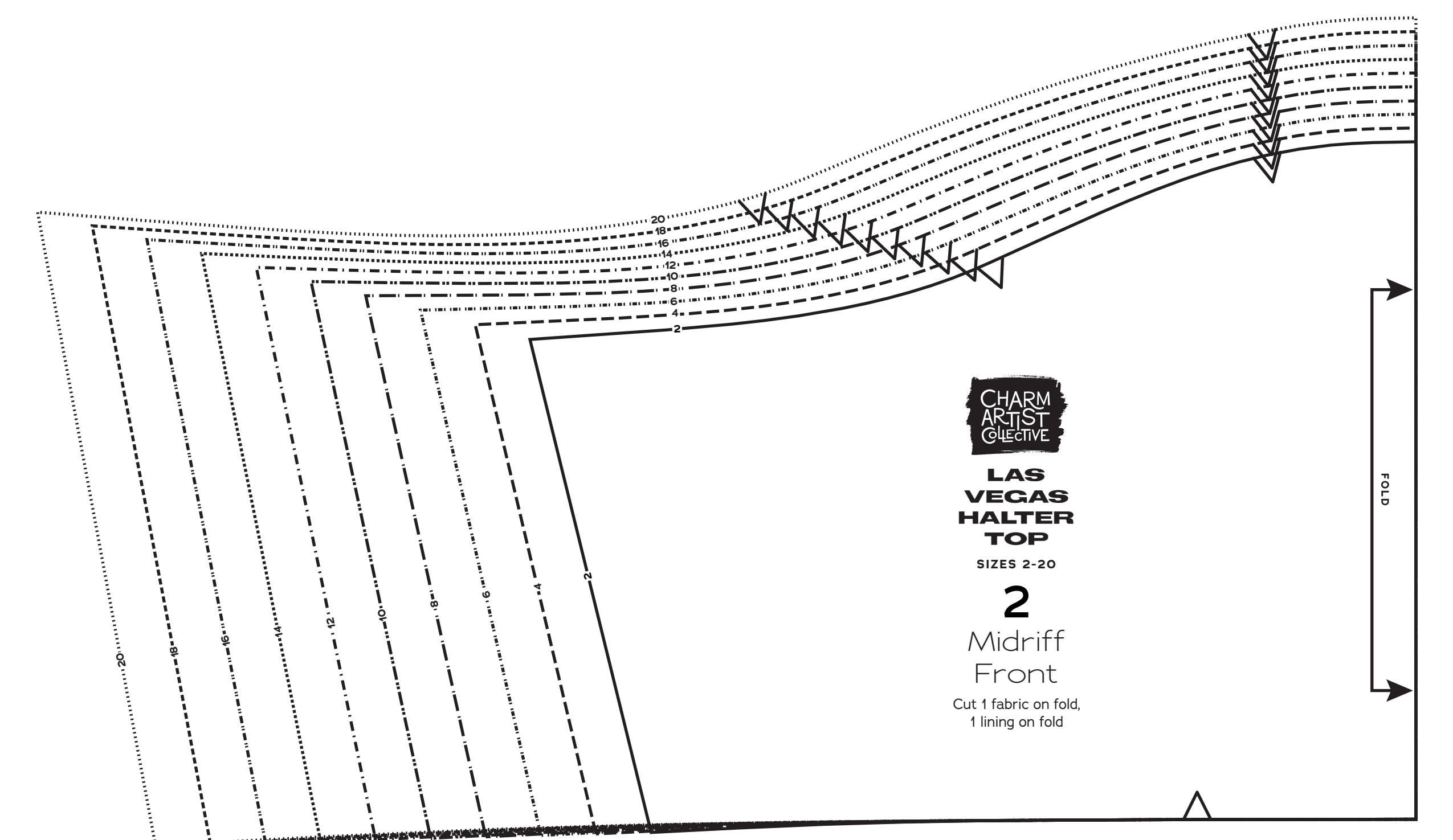
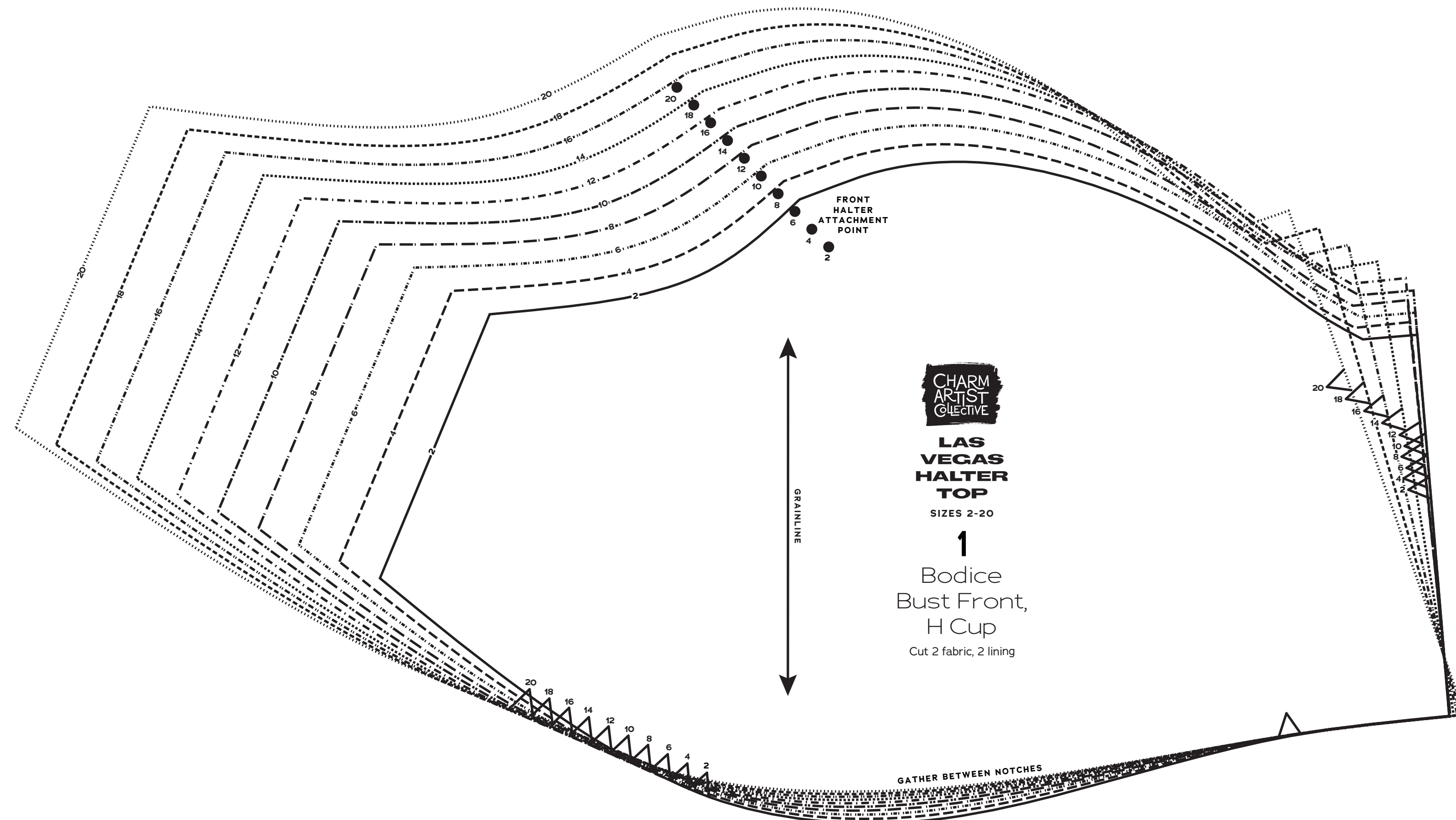
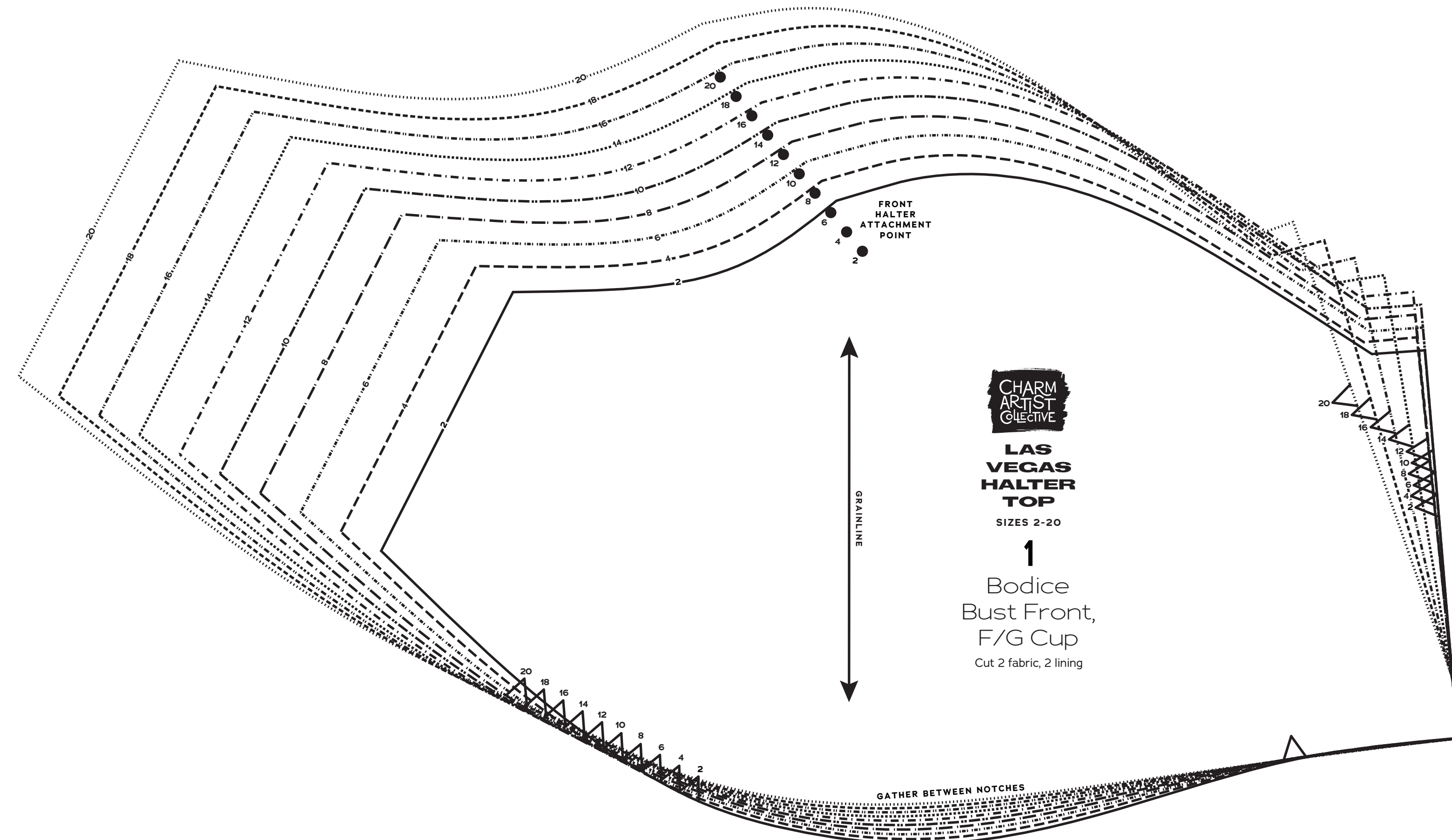
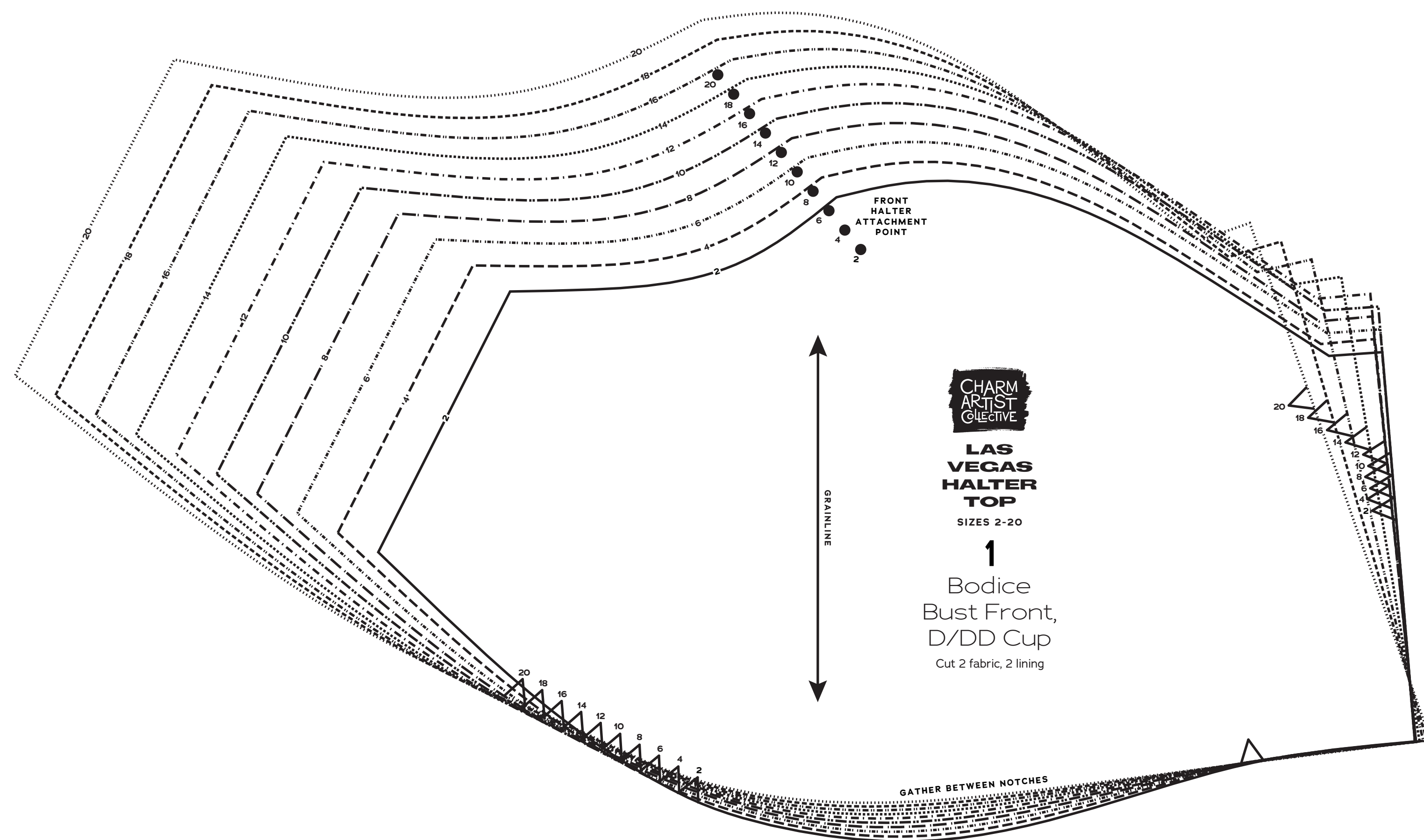
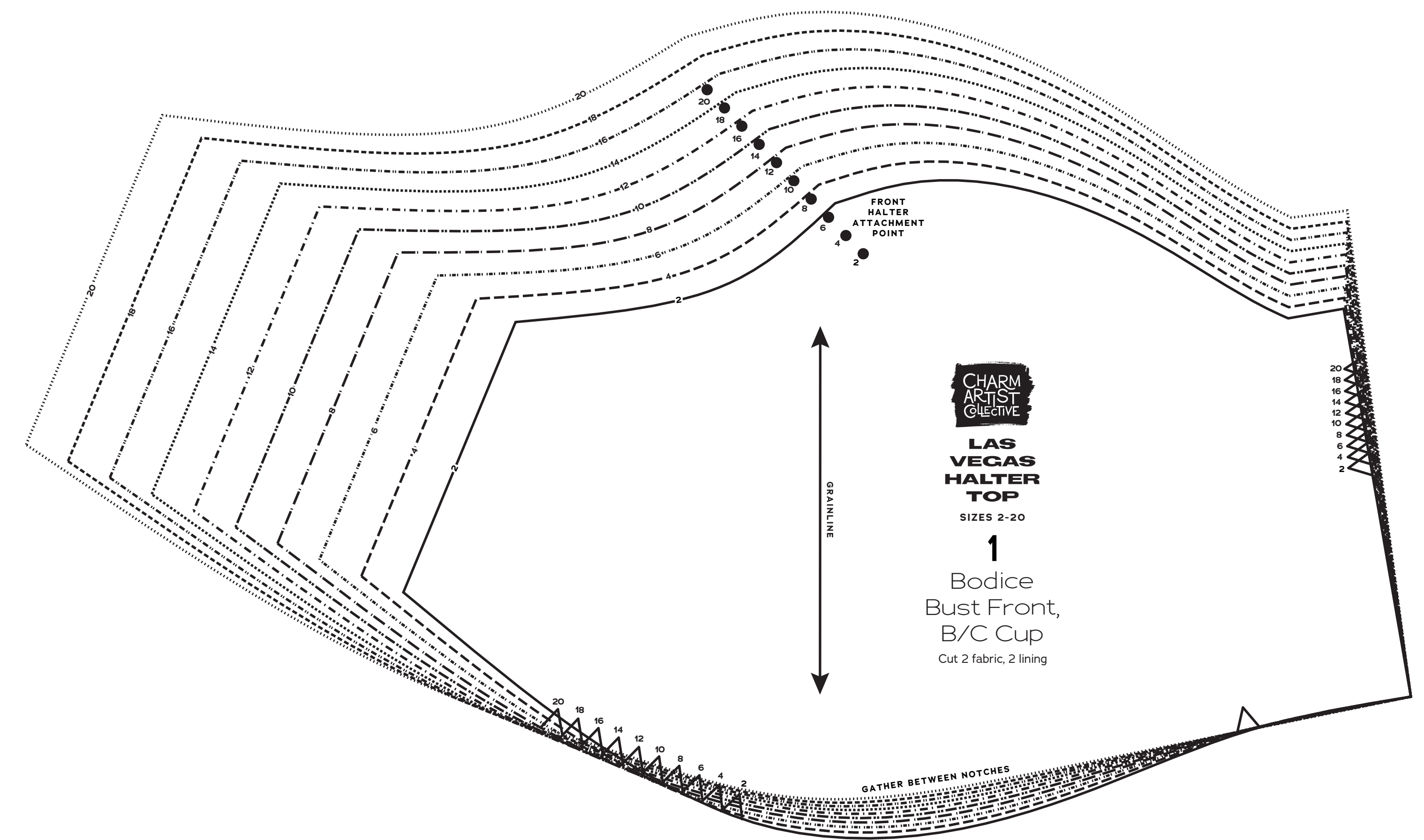
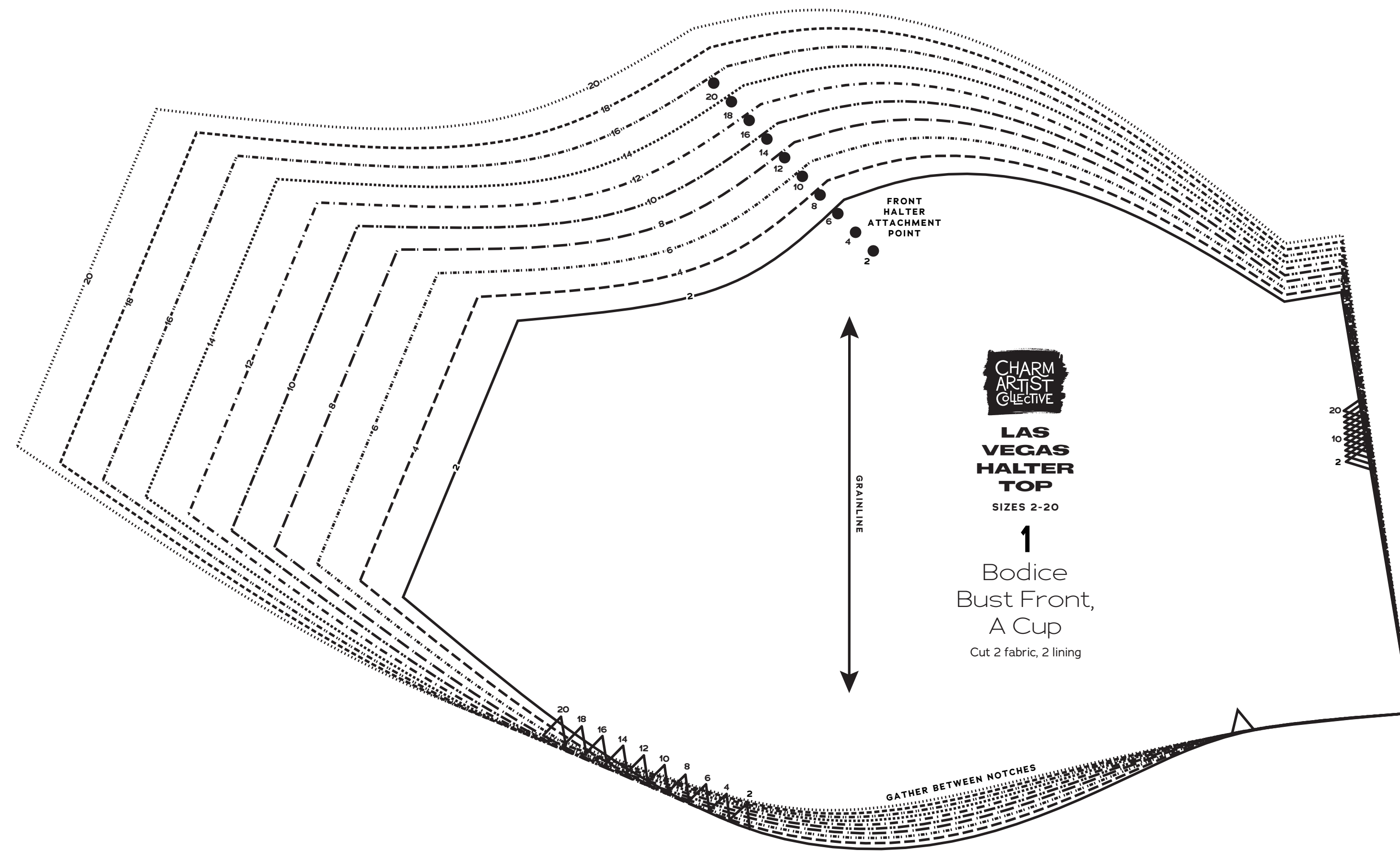
1	Bodice Bust Front, A cup
1	Bodice Bust Front, B/C cup
1	Bodice Bust Front, D/DD cup
1	Bodice Bust Front, F/G cup
1	Bodice Bust Front, H cup
2	Midriff Front

SIZES 2-20
PATTERN SIZE KEY

2	---
4	---
6	---
10	---
12	---
14	---
16	---
18	---
20	---

SYMBOL KEY

- grainline arrow
- match point/ placement mark
- 1" test square



CHARM ARTIST COLLECTIVE
LAS VEGAS HALTER TOP

Sizes 2-20
 with cup sizes A-H

5/8 inch (1.5 cm) seam allowances are included on all pattern pieces.

PAGE 2 OF 2

PATTERN PIECE INDEX

3	Bodice Back
4	Peplum Front
5	Peplum Back
6	Halter Strap Front
7	Halter Strap Back
8	Collar

SIZES 2-20 PATTERN SIZE KEY

2	-----
4	-----
6	-----
8	-----
10	-----
12	-----
14	-----
16	-----
18	-----
20	-----

SYMBOL KEY

- grainline arrow
- match point/ placement mark
- 1" test square

