



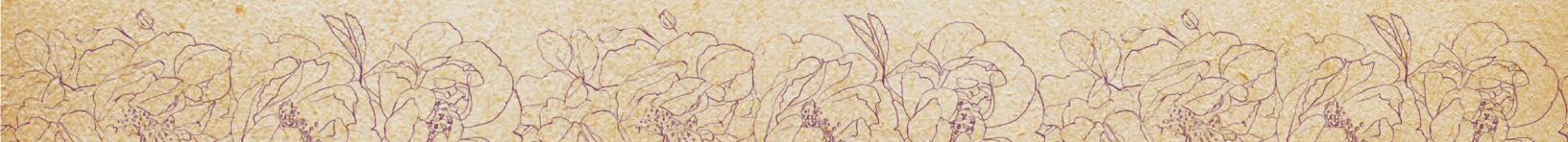
Bloomers and
Peasant Sleeve
for the Frenchy
Peignoir Set

Frenchy

BABYDOLL EXPANSION

A PATREON
EXCLUSIVE
PATTERN

© 2023 Charm
Patterns by Gertie



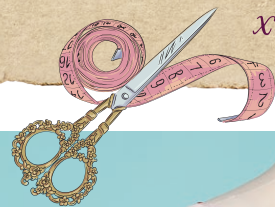


How adorable! I'm delighted to offer you this bonus pattern expansion for one of our in-house favorites, the Frenchy Peignoir Set.

The Frenchy Babydoll Expansion turns the Frenchy Nightie into a fun babydoll set with an adorable peasant sleeve and matching bloomers.

Make one set in risqué see-through mesh for naughty nighttime adventures, and create another in comfy jersey for evening lounging at home.

Then share your makes using #frenchypeignoir and #charmpatterns (if you dare)!



xoxo, Gertie

Bloomer



Nightie with Peasant Sleeve



Key Details

- Vintage-style bloomers
- Peasant sleeve addition to the Frenchy Nightie
- Babydoll version of the Frenchy Nightie



SIZE CHART

The Frenchy Babydoll Expansion is sized in women's US 2–20 and 18–34. Please use the size chart in the Frenchy Peignoir Set to choose your size. Not sure which size range to choose? Read more about our [two size ranges here!](#)

FIT NOTES

The Frenchy Bloomers are designed with positive ease throughout; the waist fits snugly with elastic and has negative ease when finished. The Frenchy Peasant Sleeve will fit snug against your upper arm. See the charts below for finished garment measurements.

Finished Measurements

Sizes 2-20	2	4	6	8	10	12	14	16	18	20
Bloomers Waist	22.25 in 56.5 cm	24.25 in 61.6 cm	26.25 in 66.7 cm	27.25 in 69.2 cm	29.25 in 74.3 cm	31.25 in 79.4 cm	33.25 in 84.5 cm	35.25 in 89.5 cm	37.25 in 94.6 cm	39.25 in 99.7 cm
Bicep	10 in 25.4 cm	10.5 in 26.7 cm	11 in 27.9 cm	11.5 in 29.2 cm	12 in 30.5 cm	12.5 in 31.8 cm	13 in 33 cm	13.5 in 34.3 cm	14 in 35.6 cm	14.5 in 36.8 cm
Leg opening	19.5 in 49.5 cm	20.75 in 52.7 cm	22 in 55.9 cm	23.25 in 59.1 cm	24.5 in 62.2 cm	25.75 in 65.4 cm	27 in 68.6 cm	28.25 in 71.8 cm	29.5 in 74.9 cm	30.75 in 78.1 cm

Sizes 18-34	18	20	22	24	26	28	30	32	34
Bloomers Waist	36.25 in 92.1 cm	38.25 in 97.2 cm	40.25 in 102.2 cm	42.25 in 107.3 cm	44.25 in 112.4 cm	46.25 in 117.5 cm	48.25 in 122.6 cm	50.25 in 127.6 cm	52.25 in 132.7 cm
Bicep	14.5 in 36.8 cm	15 in 38.1 cm	15.5 in 39.4 cm	16 in 40.6 cm	16.5 in 41.9 cm	17 in 43.2 cm	17.5 in 44.5 cm	18 in 45.7 cm	18.5 in 47 cm
Leg opening	27 in 68.6 cm	28.25 in 71.8 cm	29.5 in 74.9 cm	30.75 in 78.1 cm	32 in 81.3 cm	33.25 in 84.5 cm	34.5 in 87.6 cm	35.75 in 90.8 cm	37 in 94 cm

Pattern Pieces

BLOOMERS AND SLEEVE

- Bloomer Front**
Cut 2 fabric
- Bloomer Back**
Cut 2 fabric
- Bloomer Leg Binding**
Cut 2 fabric
- Peasant Sleeve**
Cut 2 fabric

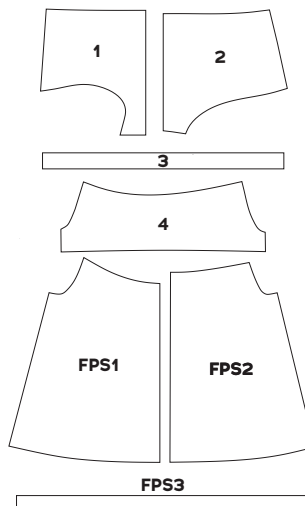
Ruffle (optional)

NIGHTIE

You'll need the following pieces from the Frenchy Peignoir Set pattern (released October 2022 on Patreon).

- FPS1. Nightie Front**
Cut 1 fabric on fold, 1 lining on fold*
- FPS2. Nightie Back**
Cut 1 fabric on fold, 1 lining on fold*
- FPS3. Nightie Neck Bias Binding**
Cut 1 fabric on bias

* Shorten the nightie to your desired length. We cut ours to 8 in (20.3 cm) above the knee-length cutting line.



Fabric Notes

For the bloomers and peasant sleeve, use the same very lightweight and drapery fabrics recommended in the original Frenchy Peignoir Set pattern: rayon or silk chiffon, 15 denier nylon tricot, and lace for a see-through garment; cotton lawn or batiste, 40 denier nylon tricot, and silk charmeuse for more opacity.

For the bloomers, we also recommend lingerie mesh, stretch lace, stretch silk, or a stretch knit like jersey.

Materials & Notions

- Main fabric
- Thread to match
- 1 to 1³/₄ yards (0.9 to 1.6 m) 1/4-in (6 mm) elastic for bloomers leg openings
- 1 to 1³/₄ yards (0.9 to 1.6 m) 3/8-in (1 cm) elastic for bloomers waist opening
- 1 yard (0.9 m) 1/4-in (6 mm) elastic for peasant sleeve

Resources

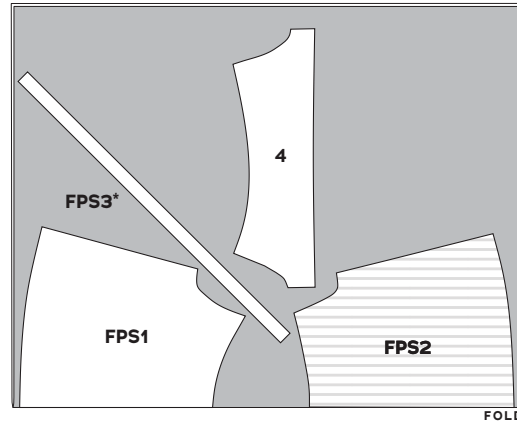
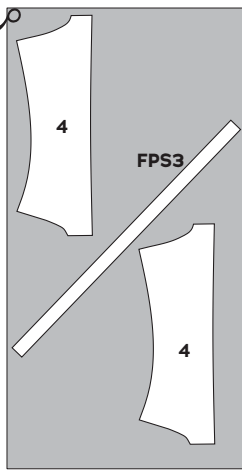
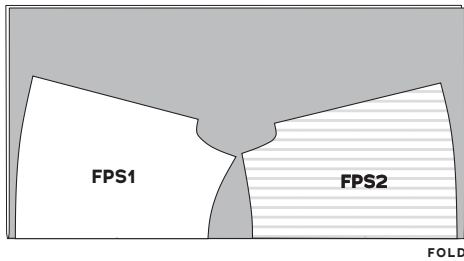
Here are some of the fabric and supplies I used for the samples and in the video tutorial. There are lots of places to purchase fabric, so this is solely a guide you can use as a reference:

[Heart flocked tulle](#)

[Lingerie bows](#)

REQUIRED YARDAGE & CUTTING LAYOUTS

NOTE: All pattern pieces are shown in a “without nap” layout. You may need additional yardage for directional prints, stripes, plaids, and other prints that need to be matched across seamlines.



KEY TO LAYOUTS



Right side of pattern piece



Wrong side of pattern piece

Be sure to note whether the pieces are cut on a double or single layer of fabric. For a double layer, there will be a note indicating FOLD on the layout.

Nightie (FPS1, FPS2, FPS3, 4)

	Sizes 2-10	Sizes 12-20	Sizes 18-24	Sizes 26-34
60 in	2½ yds 2.3 m	2¾ yds 2.5 m	2¾ yds 2.5 m	3 yds 2.7 m
104 in	1¾ yds 1.6 m	1⅞ yds 1.7 m	1⅞ yds 1.7 m	2 yds 1.8 m

60 in, all sizes

104 in, all sizes

*Cut only 1 piece of FPS3

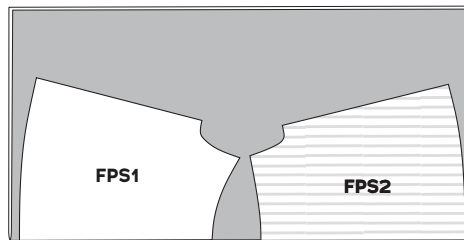
Nightie Ruffle (OPTIONAL)

Measure the circumference of the robe and multiply by 2.5 for the length of your ruffle. Cut two 3⅞-in-wide (8 cm) strips and piece together to get the entire length needed. You'll need no more than an additional ¼ yard for the ruffle.

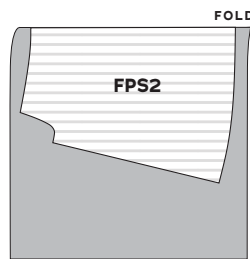
Nightie Lining, optional

(FPS1, FPS2)

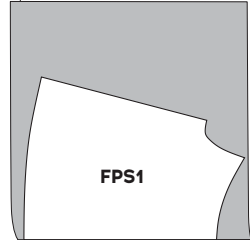
	Sizes 2-20	Sizes 18-34
60 in	1¾ yds 1.6 m	1¾ yds 1.6 m
104 in	7⁄8 yd .8 m	1 yd .9 m



60 in, all sizes



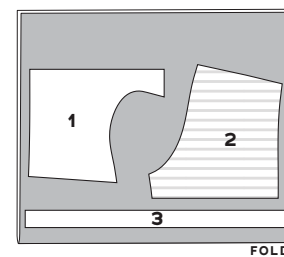
SELVEGES



104 in, all sizes

Bloomers (1, 2, 3)

	Sizes 2-10	Sizes 12-20	Sizes 18-24	Sizes 26-34
60 in	1 yd	1¼ yd	1¼ yd	1⅜ yds
104 in	.9 m	1.1 m	1.1 m	1.2 m



SEWING INSTRUCTIONS

BEFORE SEWING

Transferring marks: use dressmaker's tracing paper and a tracing wheel to transfer all pattern markings to the wrong side (WS) of your fabric. Mark your pattern notches with a fabric marking pen or chalk in the seam allowances of the pattern.

Seam Finishing: if finishing seams with a serger, serge the following seam allowances (without trimming the edges) before construction. Knits typically do not fray, so seam finishing is optional. Alternatively, use a French seam for light-weight woven or see-through fabrics.

- Center front (CF) and side seams of Bloomer Fronts
- Center back (CB) and side seams of Bloomer Backs
- Peasant sleeve seam

NOTES

- 5/8-in (1.5 cm) seam allowances are included on all pattern pieces, except where otherwise noted.
- Use a microtex needle to avoid skipped stitches for nylon chiffon or tightly woven fabrics. Use a stretch needle if sewing with knits.
- Stretch fabric does not fray, so seam finishing isn't necessary.
- Use caution when pressing synthetic fabrics and always use a press cloth. Do not press elastics as they will melt!

SEWING FRENCH SEAMS

French seams may be used on the CF/CB and side seams of the bloomers and the underarm seam of the peasant sleeve. First, using a 3/8-in (1 cm) seam allowance, sew your seam with WS together. Trim the seam allowance to about 1/8 in (3 mm). Press open and then to one side. Fold and pin the fabric right sides (RS) together and press flat. Stitch 1/4 in (6 mm) from the edge of the seam and press to one side.

SEW THE FRENCHY BABYDOLL

Bloomers

1. Assemble bloomer fronts and backs: pin Bloomer Fronts (1) RS together at CF, matching notches. Stitch. If not doing French seams, press seam allowance to one

side and finish as desired. Repeat for Bloomer Backs (2), pressing seam allowance to the opposite side.

2. Sew crotch seam: pin bloomer front unit to bloomer back unit RS together at crotch seam, matching seam lines and making sure seam allowances are folded in opposite directions. Stitch. If not doing French seams, press seam allowance to one side and finish as desired.

3. Sew side seams: pin bloomer front unit to bloomer back unit RS together at side seams, matching notches. Stitch. Press seam allowances to the back and trim to 1/4 in (6 mm).

4. Assemble leg binding: pin short ends of Bloomer Leg Binding (3) RS together to create a ring. Stitch and press seam allowance open. Fold and press binding ring in half lengthwise, WS together, and pin raw edges. Repeat for second binding.

5. Attach binding to bloomers: pin raw edges of folded bloomer leg bindings to RS of bloomers along each leg opening, matching the binding join seam allowance to the crotch seam and the binding notch to the side seam. Stitch, leaving a 1-in (2.5 cm) section unsewn for inserting elastic.

6. Insert bloomers leg elastic: cut two lengths of 1/4-in (6 mm) elastic based on your size in the chart. Using a bodkin or safety pin attached to one end of the elastic, thread the elastic through the bloomers binding. It's helpful to pin the free end of the elastic to the fabric so it doesn't slip inside the binding. Once the elastic has been fed through the band, pin the elastic ends together, overlapping 1/2 in (1.3 cm) and being careful not to twist the elastic. Stitch the elastic ends together with a zigzag stitch, forming a ring. Stitch the opening closed. Trim seam allowance to 1/4 in (6 mm) and press toward bloomers. For fabrics that fray, finish the binding seam allowances by serging or zigzagging as one. Repeat for second bloomer leg.

7. Hem bloomers waist: press bloomers waist seam allowance 5/8 in (1.5 cm) to WS. Pin into place and stitch, leaving a 1-in (2.5 cm) section unsewn for inserting waist elastic.

8. Insert waist elastic: cut a length of 3/8-in (1 cm) elastic following your size in the chart below. To insert waist elastic, follow the instructions for inserting bloomers leg elastic and stitch the opening closed.

Nightie with a Peasant Sleeve

For our babydoll Frenchy Nightie, we cut the nightie 8 inches (20.3 cm) above the knee-length cutting line.

1. Sew Frenchy Nightie: follow the first two steps of the original Frenchy Nightie instructions to sew side seams and attach lining.

2. Sew the sleeve: the Peasant Sleeve (4) replaces the Nightie Sleeve (4) from the original pattern. Pin peasant sleeve RS together along underarm seam. Stitch. Press seam allowances open.

3. Gather sleeve cap: using a 4-mm to 5-mm stitch length, sew two lines of stitching on each sleeve cap between circles. Sew the first using 1/2-in (1.3 cm) seam allowance and the second using 1/4-in (6 mm) seam allowance. Pull up bobbin threads to gather.

4. Gather neckline: follow step 5 of the Frenchy Nightie instructions to gather the nightie neckline.

5. Attach sleeve to nightie: pin each peasant sleeve to bodice underarms, RS together, matching underarm seams and notches. Stitch. Trim underarm seam allowances as one to about 3/8 in (1 cm), then finish seams as desired. If serging, trim and finish simultaneously. Press sleeve over seam allowances.

6. Finish sewing the nightie: starting with step 7 (assembling the neckline binding), follow the steps of the Frenchy Nightie instructions to completion.

7. Hem the peasant sleeve: press peasant sleeve hem allowances 5/8 in (1.5 cm) to WS. Pin into place and stitch with a 1/2-in (1.3 cm) seam allowance, leaving a 1-in (2.5 cm) section unsewn for inserting elastic.

8. Insert sleeve elastic: cut two lengths of 1/4-in (6 mm) elastic following your size in the chart. Using a

bodkin or safety pin attached to one end of the elastic, thread the elastic through the sleeve hem. It's helpful to pin the free end of the elastic to the fabric so it doesn't slip inside the binding. Once the elastic has been fed through, pin the elastic ends together, overlapping by 1/2 in (1.3 cm) and being careful not to twist the elastic. Stitch the elastic ends together with a zigzag stitch, forming a ring. Stitch from the sleeve RS to close the opening for the elastic. Repeat for second sleeve.

9. Add a ruffle (optional): cut a strip of nightie fabric that is 2 1/2 times the circumference of your nightie hem and 3 1/8 in (8 cm) wide.

Note: We used a mesh fabric that doesn't fray, so we left the bottom edge of the ruffle raw. If you wish to hem your ruffle, add another 1/2 in [1.3 cm] to the width of your strip for a hem allowance.

Pin short ends RS together to create a ring. Stitch and press seam allowances open. Gather ruffle ring by sewing two rows of gathering stitches at 1/4 in (6 mm) and 1/2 in (13 cm) from upper raw edge. Pull up the bobbin stitches until ruffle ring matches the circumference of the nightie hem. Pin ruffle to nightie hem, RS together. Stitch. Trim and finish seam allowances and press toward nightie.

Enjoy your cute new Frenchy Babydoll set!

ELASTIC CUTTING CHART

Leg opening

Sizes 2-20	2	4	6	8	10	12	14	16	18	20
Leg elastic (cut 2)	20 in 50.8 cm	21.25 in 54 cm	22.5 in 57.2 cm	23.75 in 60.3 cm	25 in 63.5 cm	26.25 in 66.7 cm	27.5 in 69.9 cm	28.75 in 73 cm	30 in 76.2 cm	31.25 in 79.4 cm

Sizes 18-34	18	20	22	24	26	28	30	32	34
Leg elastic (cut 2)	27.5 in 69.9 cm	28.75 in 73 cm	30 in 76.2 cm	31.25 in 79.4 cm	32.5 in 82.6 cm	33.75 in 85.7 cm	35 in 88.9 cm	36.25 in 92.1 cm	37.5 in 95.3 cm

Waist

Sizes 2-20	2	4	6	8	10	12	14	16	18	20
Waist elastic (cut 1)	22.75 in 57.8 cm	24.75 in 62.9 cm	26.75 in 67.9 cm	28.75 in 73 cm	30.75 in 78.1 cm	32.75 in 83.2 cm	34.75 in 88.3 cm	36.75 in 93.3 cm	38.75 in 98.4 cm	40.75 in 103.5 cm

Sizes 18-34	18	20	22	24	26	28	30	32	34
Waist elastic (cut 1)	36.25 in 92.1 cm	38.25 in 97.2 cm	40.25 in 102.2 cm	42.25 in 107.3 cm	44.25 in 112.4 cm	46.25 in 117.5 cm	48.25 in 122.6 cm	50.25 in 127.6 cm	52.25 in 132.7 cm

Sleeve

Sizes 2-20	2	4	6	8	10	12	14	16	18	20
Sleeve elastic (cut 2)	10.5 in 26.7 cm	11 in 27.9 cm	11.5 in 29.2 cm	12 in 30.5 cm	12.5 in 31.8 cm	13 in 33 cm	13.5 in 34.3 cm	14 in 35.6 cm	14.5 in 36.8 cm	15 in 38.1 cm

Sizes 18-34	18	20	22	24	26	28	30	32	34
Sleeve elastic (cut 2)	15 in 38.1 cm	15.5 in 39.4 cm	16 in 40.6 cm	16.5 in 41.9 cm	17 in 43.2 cm	17.5 in 44.5 cm	18 in 45.7 cm	18.5 in 47 cm	19 in 48.3 cm

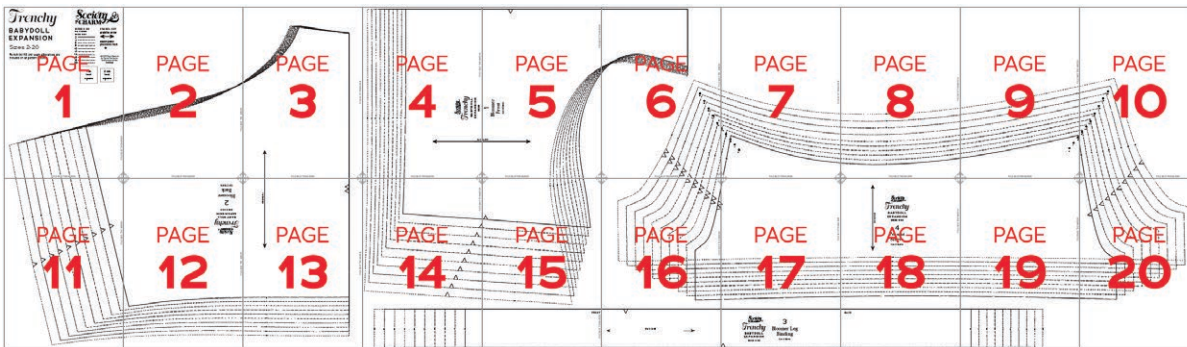
PATTERN PIECE LOCATION GUIDE

Here is a list to help you locate the pattern pieces on the letter-size tiled pages and A0 pattern sheets.
The tiled pieces and A0 sheets are included as separate pdf files as part of this digital pattern.

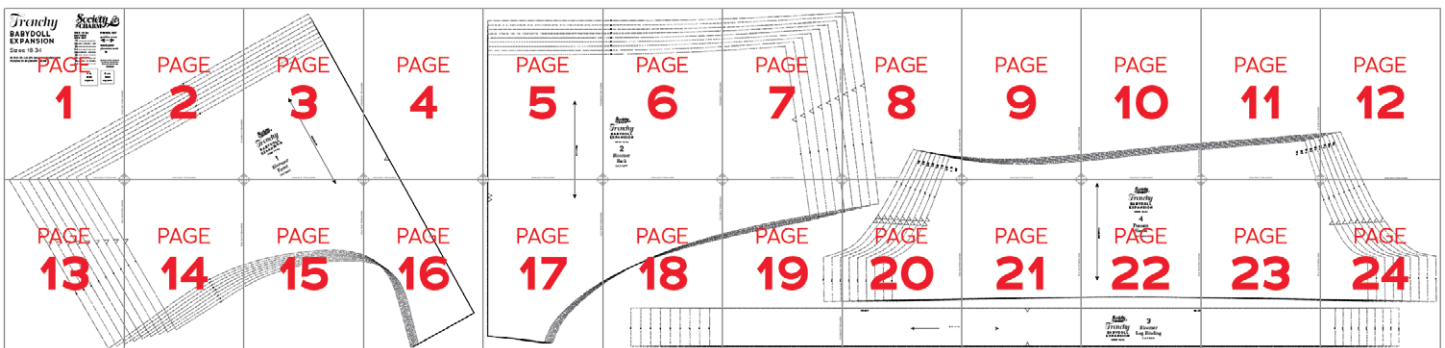
PC#	Piece Name	SIZES 2-20		SIZES 18-34	
		Tiled	A0	Tiled	A0
1	Bloomer Front	4-6, 14-15	1	1-4, 13-16	1
2	Bloomer Back	1-3, 11-13	1	5-8, 17-20	1
3	Bloomer Leg Binding	14-19	1	8-12, 19-24	1
4	Peasant Sleeve	6-10, 16-20	1	18-24	1

TILING MAPS

Sizes 2-20



Sizes 18-34



HOW TO USE THIS PATTERN

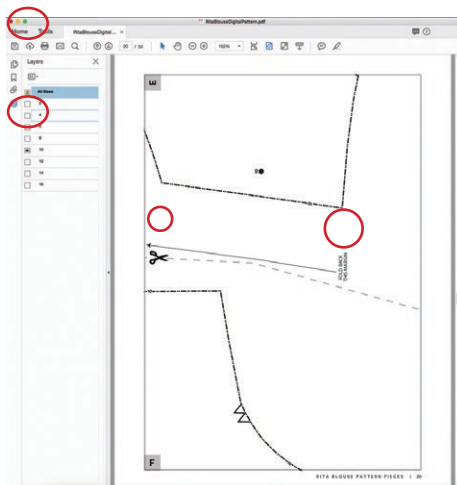
The pattern pieces are tiled so you can print them on Letter (8½” x 11”) or A4 size paper. You can also send the A0 pattern sheet PDF to a local or online printer (like www.pdfplotting.com) to print on large sheets (36” x 48” for U.S. or AO for international).

This pattern includes size layers. To get the best results, open either the Tiled or A0 pattern pieces PDF in Acrobat Reader.

Open the Layers Palette (View > Show/Hide > Navigation Panes > Layers) and hide all of the layer(s) except for

the ones you want to print by clicking on the eye icon.

The All Sizes layer has general pattern information and will always print.



WORKING WITH THE TILED PIECES

Go to File > Print and change the page range to the pages you need for the pieces you’ve chosen (see Pattern Pieces Printing Index). Make sure the Page Sizing settings to 100% or Actual Size. Test this after printing by measuring the 1” test box on the first page of the bodice pattern pieces.

Cut apart any pattern pieces that share a page by cutting on the gray long dashed lines. Then fold back the page margins on each page as directed.

Tape the pages together, butting up the folded page edges with the gray margin lines, matching up the letters in gray boxes.

MORE FROM GERTIE

On Instagram: Stay in the loop and get inspired.

On YouTube: Learn beginner and advanced sewing skills and techniques through my tutorials, watch episodes of my Gertie’s World series, and join regular live streams.

On Patreon: Access monthly patterns and tutorial videos.

At CharmPatterns.com: Shop my sewing patterns and accessories.

