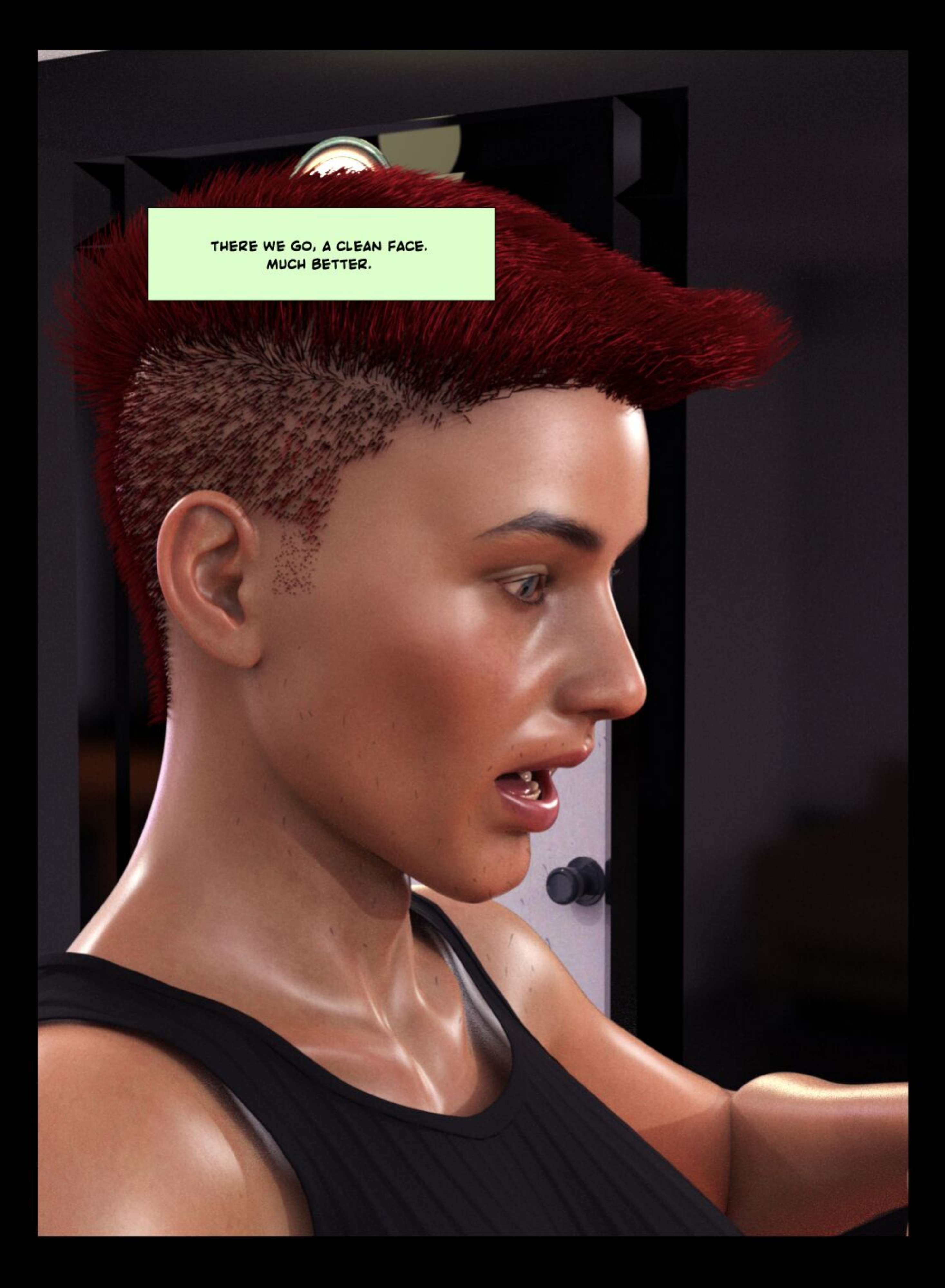




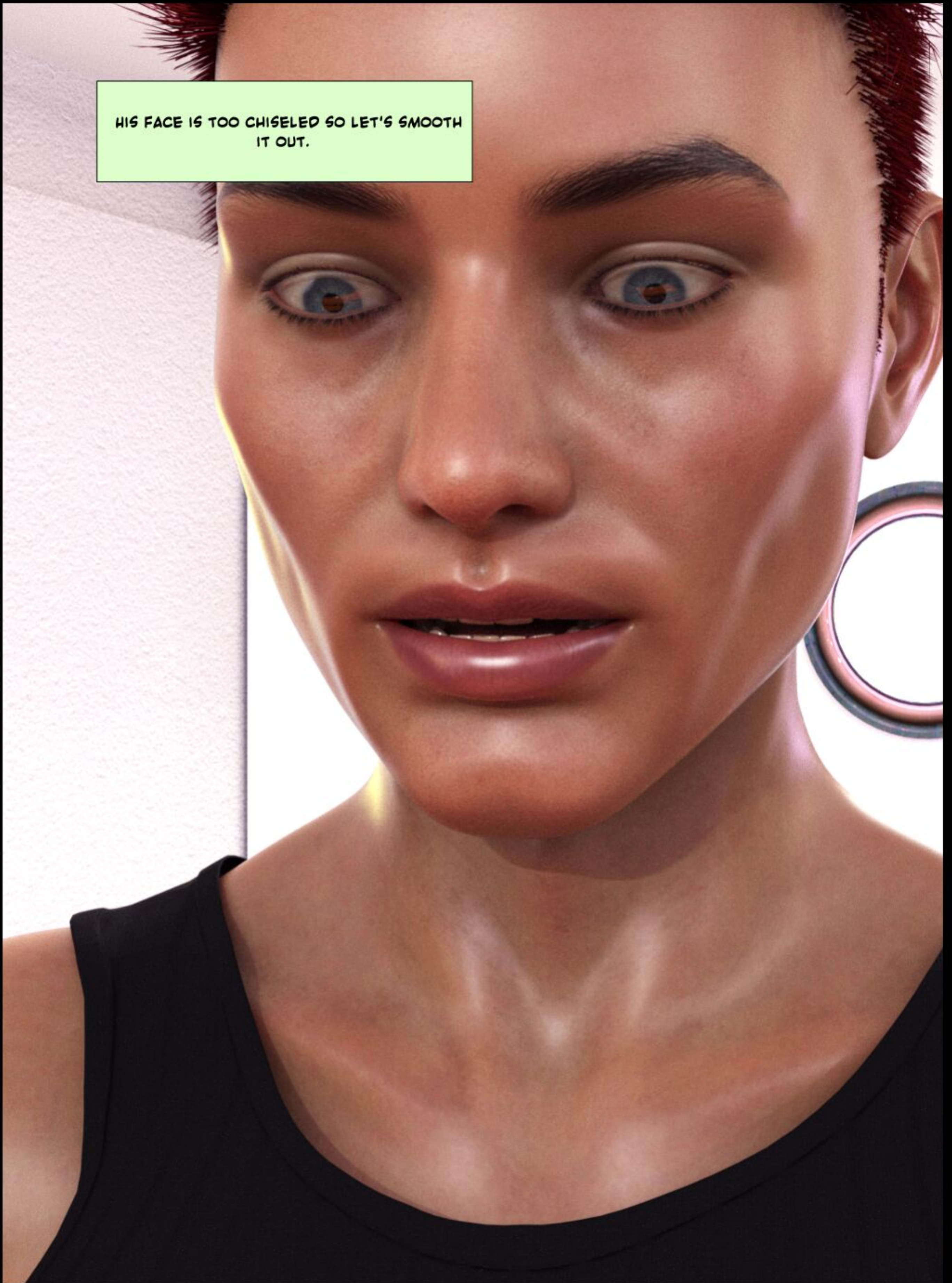
OKAY,
PRESS THIS AND
THAT.

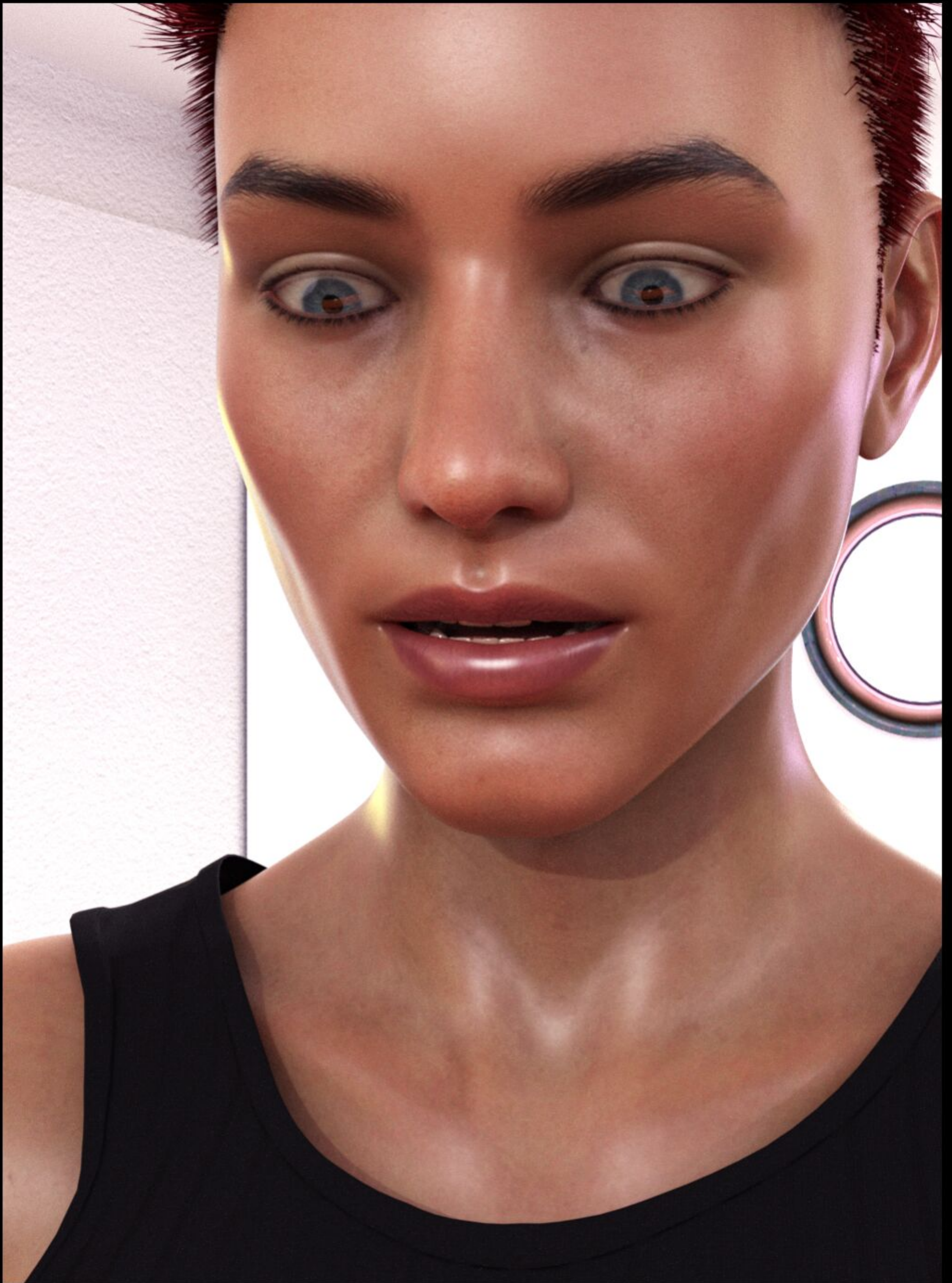
OKAY, I'VE MADE MY CHOICE BUT FIRST LETS
GET RID OF THAT STUBBLE.

A woman with a vibrant red mohawk hairstyle is shown in profile, facing right. She has a clean, well-maintained complexion. She is wearing a black ribbed tank top. The background consists of dark grey lockers with a circular light fixture visible above her head. A bright green rectangular box is overlaid on the top left of the image, containing the text "THERE WE GO, A CLEAN FACE. MUCH BETTER." in black, all-caps font.

THERE WE GO, A CLEAN FACE.
MUCH BETTER.

HIS FACE IS TOO CHISELED SO LET'S SMOOTH
IT OUT.







THERE WE GO,
NOW I CAN ADD SOME OF THE DETAILS.




NOW I CAN PLUMP THOSE LIPS UP.



AND NOW TO ADD SOME MORE FACIAL FEATURES.



THATS A BIG CHANGE BUT HE HASN'T NOTICED.



AS LONG AS HE'S DISTRACTED HE WON'T
NOTICE THIS NEXT CHANGE EITHER.





HMM, I THINK WE CAN GO LONGER THAN THAT.

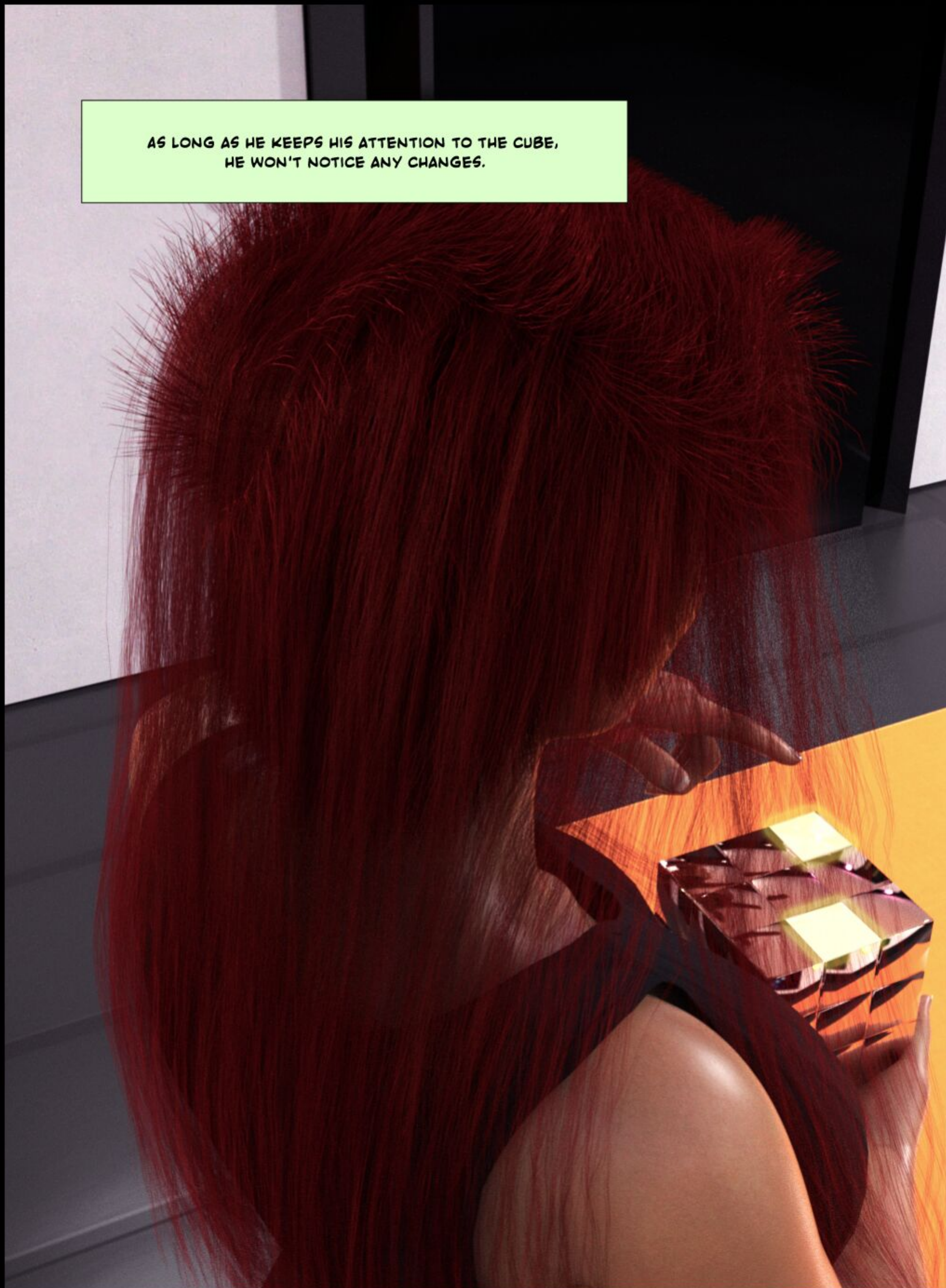
DANG IT!
COME ON!



A woman with long, vibrant red hair is shown from a high-angle, over-the-shoulder perspective. She is wearing a black, strapless top. Her hair is styled in a voluminous, straight manner. She is looking down at a glowing, multi-colored cube (yellow, orange, and red) resting on a wooden table. Her right hand is near the cube, and her left hand is holding the edge of the table. The background is a simple, dark-colored wall and floor.

**DAMN!
IT KEEPS RESETTING!
STUPID CUBE.**

AS LONG AS HE KEEPS HIS ATTENTION TO THE CUBE,
HE WON'T NOTICE ANY CHANGES.



LOOKS LIKE THE CHANGES TURNED OUT GREAT!

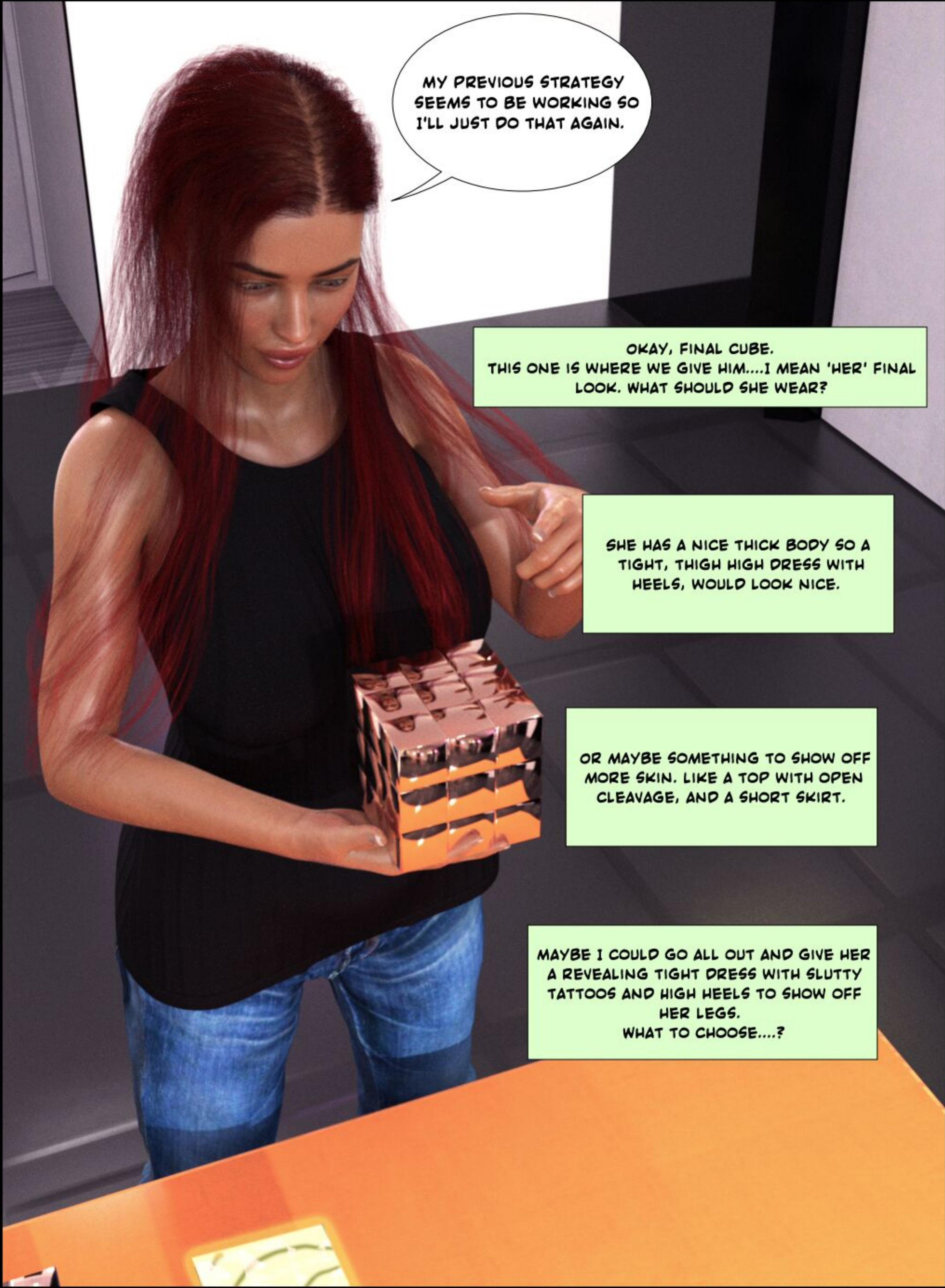
YES!
FINALLY
FINISHED IT.



A woman with long, straight, vibrant red hair is shown in profile, looking down at a puzzle box. She is wearing a dark, possibly black, sleeveless top. The puzzle box is illuminated from within, casting a warm yellow glow. The box is partially assembled, with several pieces visible. The background is a dark, textured wall with a horizontal line. Two speech bubbles are positioned above the puzzle box.

LOOKS
LIKE....LIPS?

WHATEVER.
ONE MORE PUZZLE
AND I'M DONE
HERE.



MY PREVIOUS STRATEGY SEEMS TO BE WORKING SO I'LL JUST DO THAT AGAIN.

OKAY, FINAL CUBE.
THIS ONE IS WHERE WE GIVE HIM....I MEAN 'HER' FINAL LOOK. WHAT SHOULD SHE WEAR?

SHE HAS A NICE THICK BODY SO A TIGHT, THIGH HIGH DRESS WITH HEELS, WOULD LOOK NICE.

OR MAYBE SOMETHING TO SHOW OFF MORE SKIN. LIKE A TOP WITH OPEN CLEAVAGE, AND A SHORT SKIRT.

MAYBE I COULD GO ALL OUT AND GIVE HER A REVEALING TIGHT DRESS WITH SLUTTY TATTOOS AND HIGH HEELS TO SHOW OFF HER LEGS.
WHAT TO CHOOSE....?