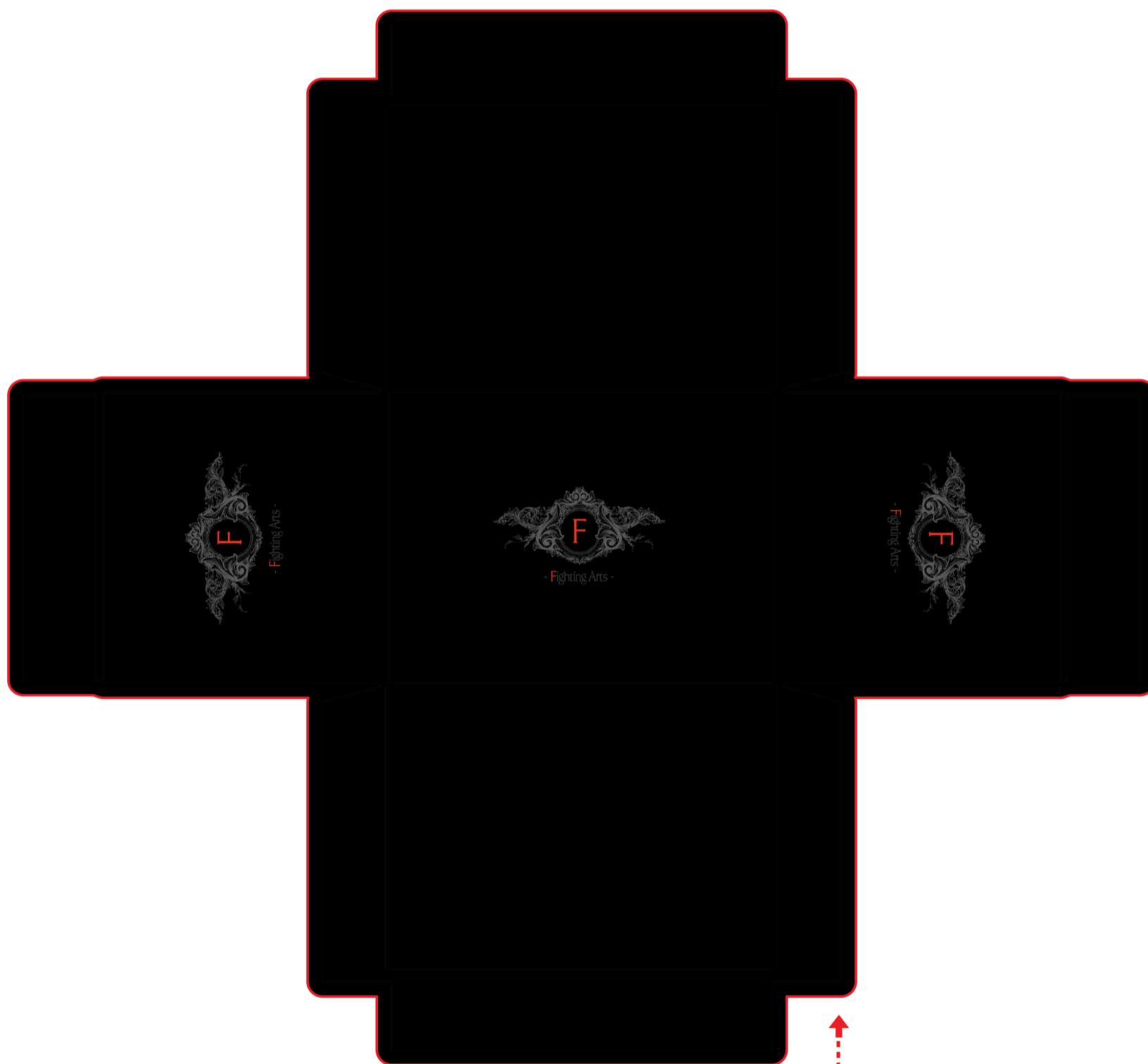
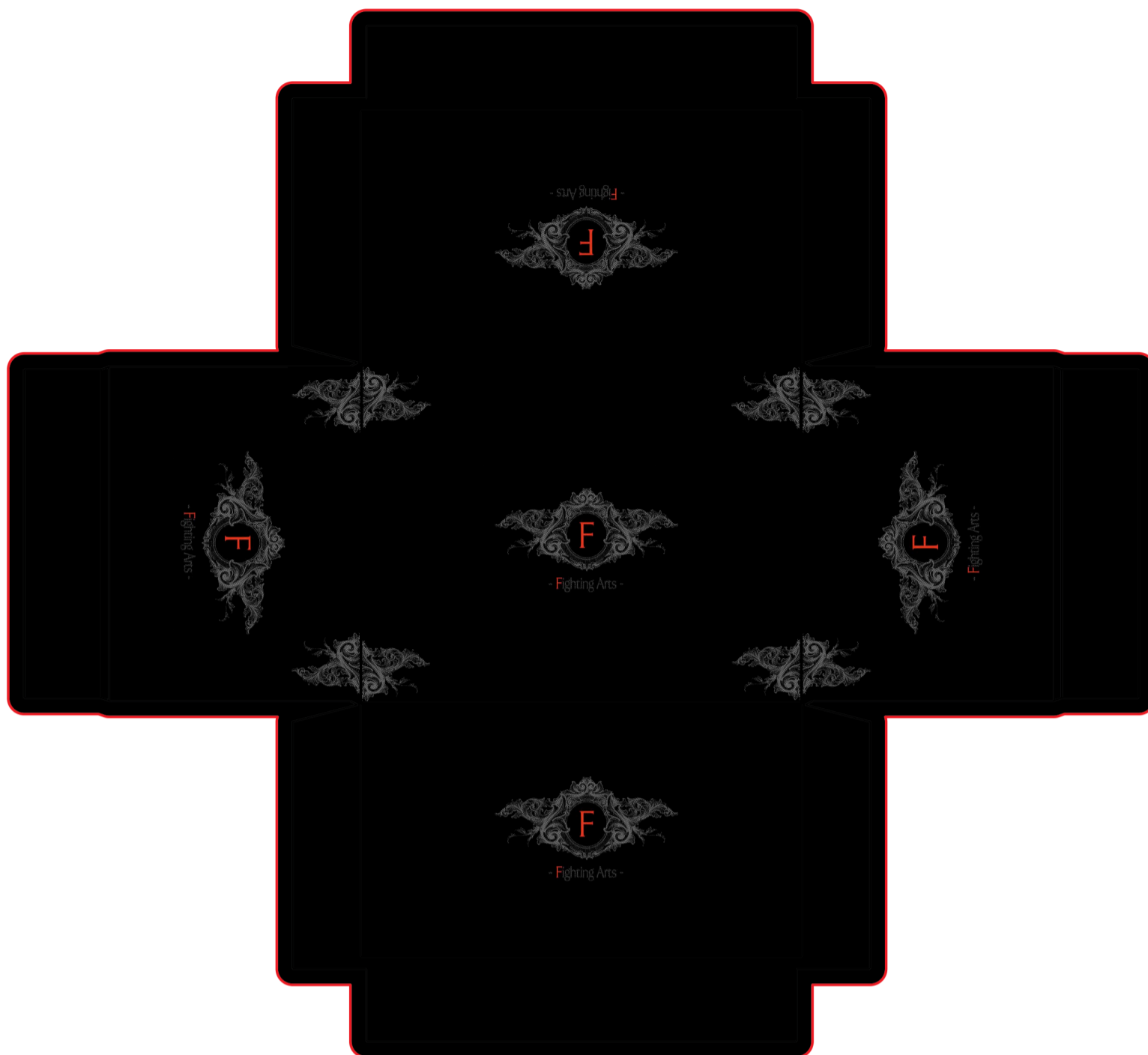


Rigid box template for up to 200 playing cards (Square size card 2" x 2")



↑ This area is for color bleeding.
Please extend your design to this area

- Steps:
- 1 Save and open this template on Adobe Illustrator.
 - 2 Add you artwork design to layer named "addYourDesign".
 - 3 *** IMPORTANT NOTE: Please do not move the position of the box template to ensure your artwork will be printed properly.**
 - 4 Before you send the file back to us, please hide the box template layer named "hiddenLayerWhenFinished".
 - 5 Save your file and send back to us.