



# MIDGE BRETON TOP

Sizes 2-20  
with cup sizes A-H

5/8 inch (in) (1.5 cm) seam allowances  
are included on all pattern pieces.

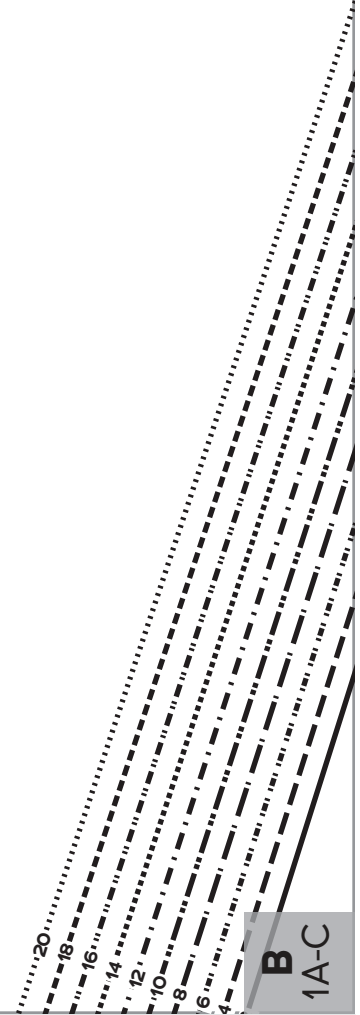
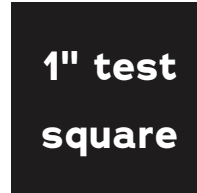
## SIZES 2-20 PATTERN SIZE KEY

2	—————
4	- - - - -
6	· · · · ·
8	- · - · -
10	· · - · -
12	- · · - ·
14	· · · - ·
16	- · · · -
18	· · · · -
20	- · · · ·

## SYMBOL KEY grainline arrow



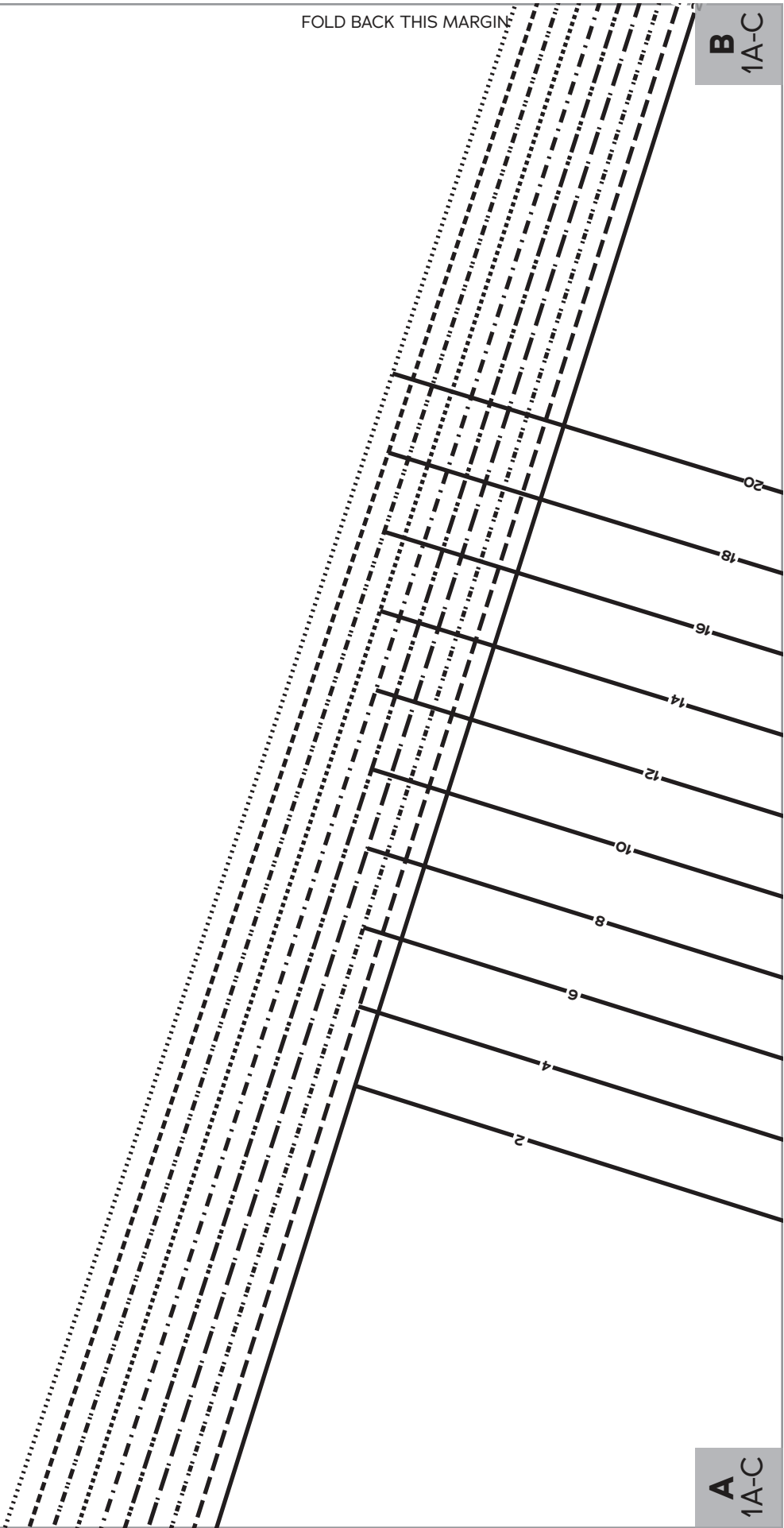
match point/  
placement mark



FOLD BACK THIS MARGIN

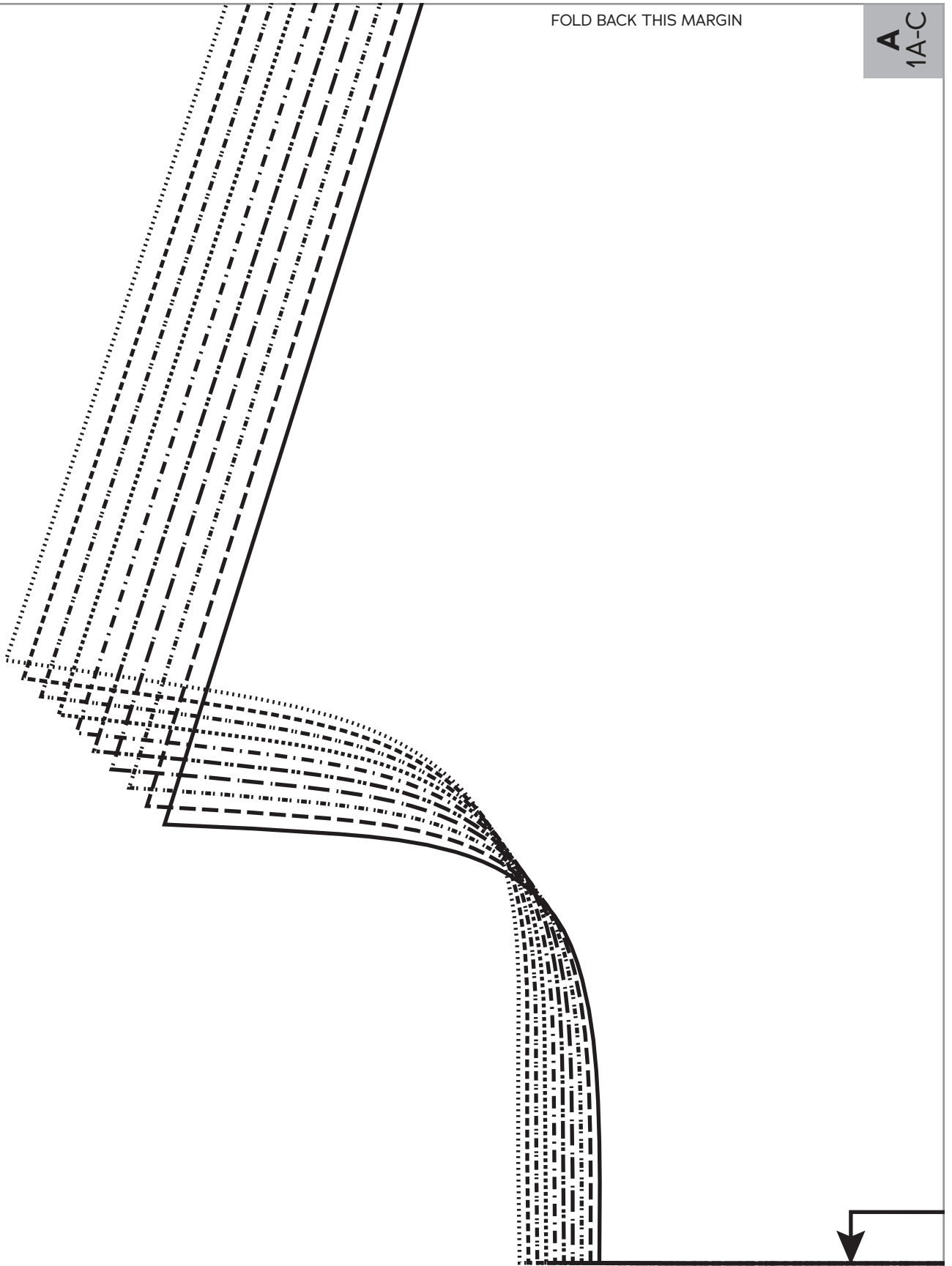
**B**  
1A-C

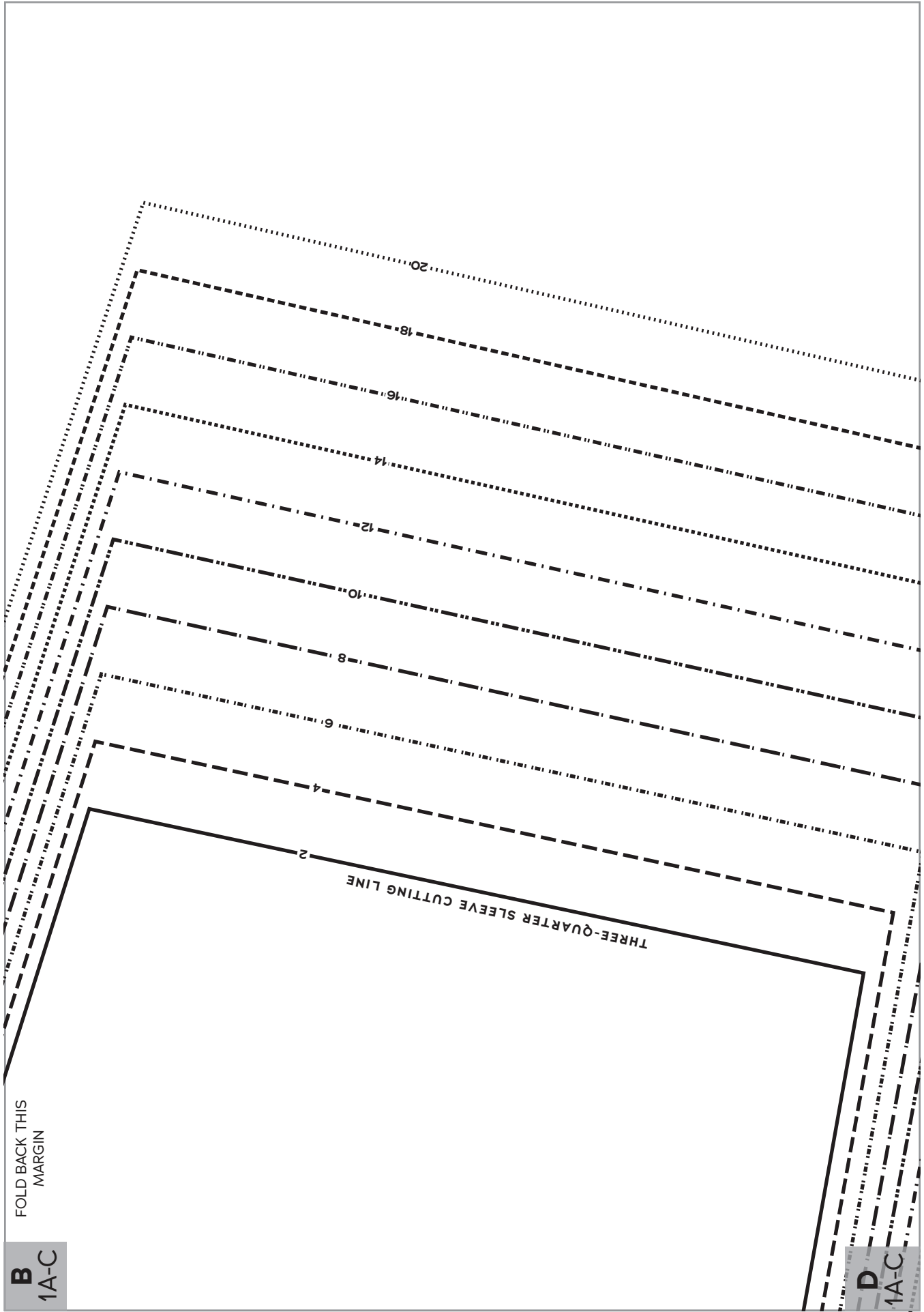
**A**  
1A-C



FOLD BACK THIS MARGIN

A  
1A-C





FOLD BACK THIS  
MARGIN

**B**  
1A-C

**D**  
1A-C

THREE-QUARTER SLEEVE CUTTING LINE

**B**  
1A-C

FOLD BACK THIS MARGIN

**D**  
1A-C

FOLD BACK THIS  
MARGIN

**A**  
1A-C

**C**  
1A-C

2  
4  
6  
8  
10  
12  
14  
16  
18

**A**  
1A-C

FOLD BACK THIS MARGIN

**C**  
1A-C

FOLD BACK THIS MARGIN



**MIDGE  
BRETON  
TOP**

SIZES 2-20

**1**

Top  
Front  
A-C Cup  
Cut 1 fabric on fold

FOLD

**E**  
1D-F

HIP-LENGTH VERSION CUTTING LINE

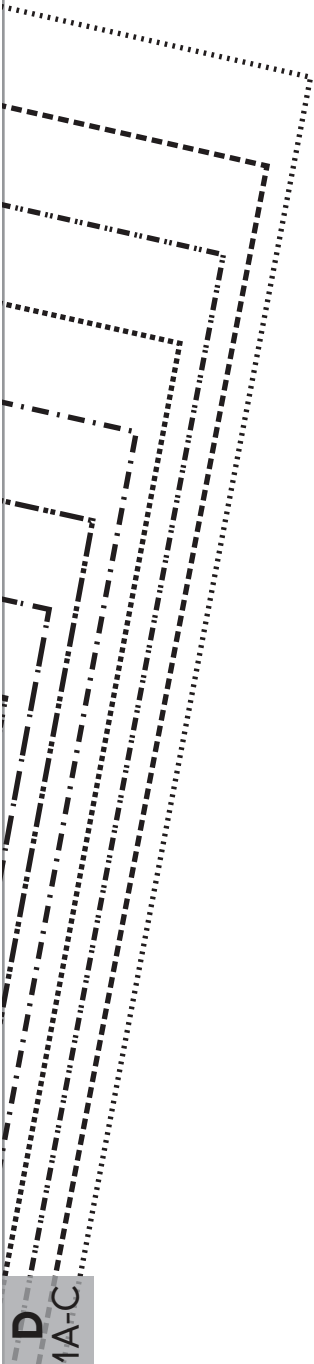
2  
4  
6  
8  
10  
12  
14  
16  
18  
20

TUNIC-LENGTH VERSION CUTTING LINE

2  
4  
6  
8  
10  
12  
14  
16  
18  
20



FOLD BACK THIS MARGIN



**D**  
1A-C

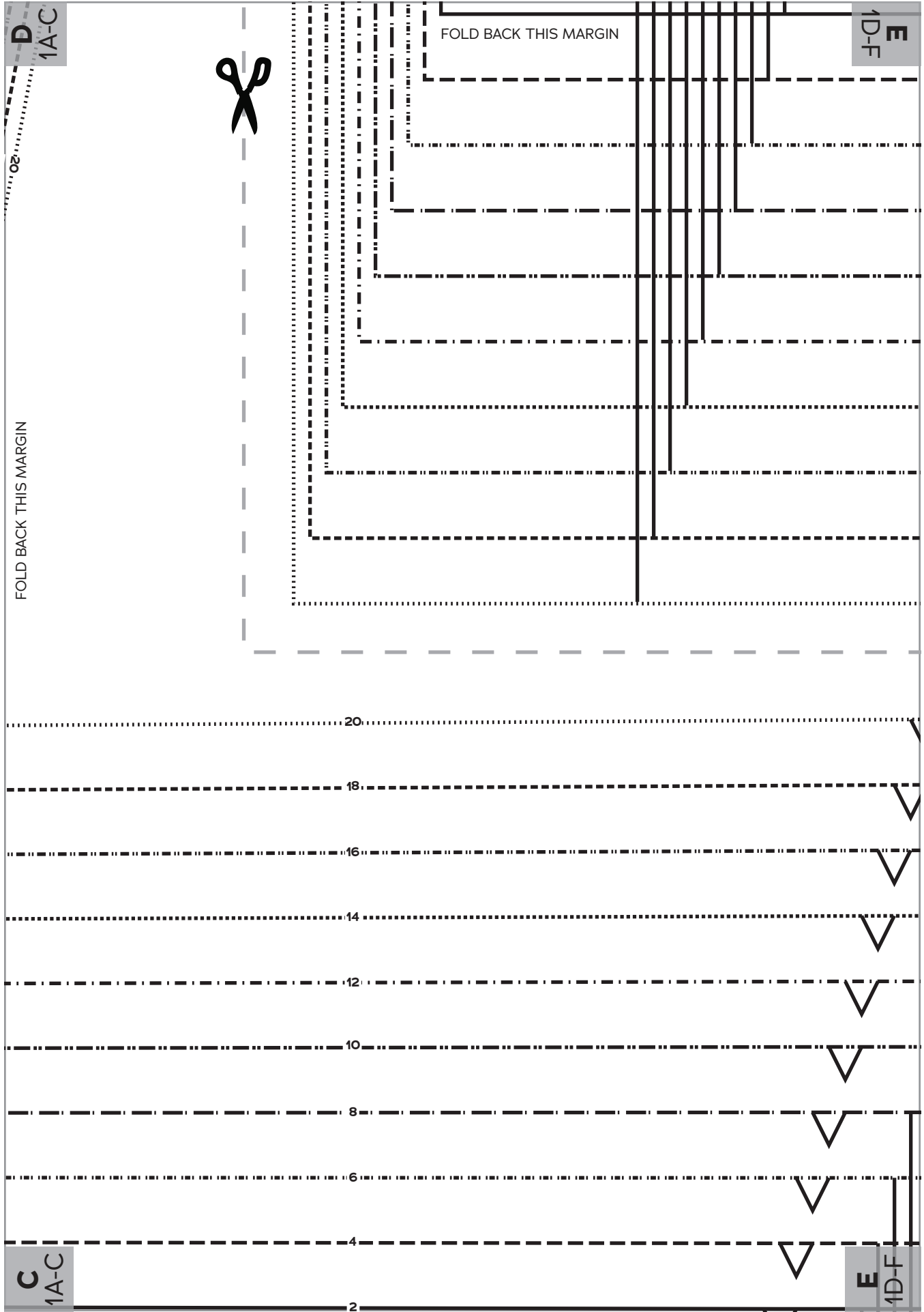
**D**  
1A-C

**E**  
1D-F



FOLD BACK THIS MARGIN

FOLD BACK THIS MARGIN





**C**  
1A-C

FOLD BACK THIS MARGIN

**E**  
1D-F

FOLD BACK THIS MARGIN

- 20 ●
- 18 ●
- 16 ●
- 14 ●
- 12 ●
- 10 ●
- 8 ●
- 6 ●
- 4 ●
- 2 ●

CROPPED VERSION POCKET

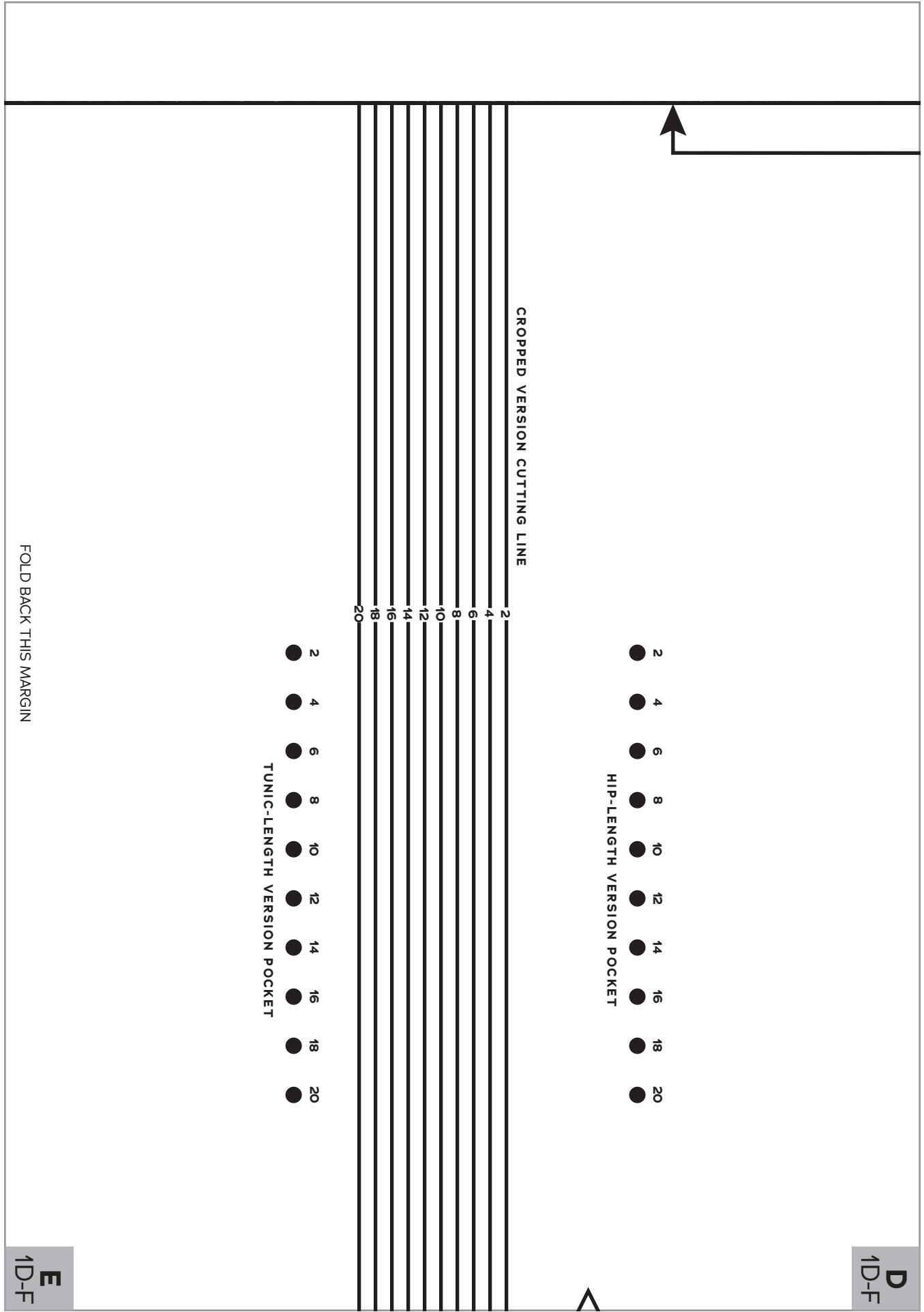
- 20 ●
- 18 ●
- 16 ●
- 14 ●
- 12 ●
- 10 ●
- 8 ●
- 6 ●
- 4 ●
- 2 ●

HIP-LENGTH VERSION POCKET

- 8
- 6
- 4
- 2

CROPPED VERSION CUTTING LINE





CROPPED VERSION CUTTING LINE

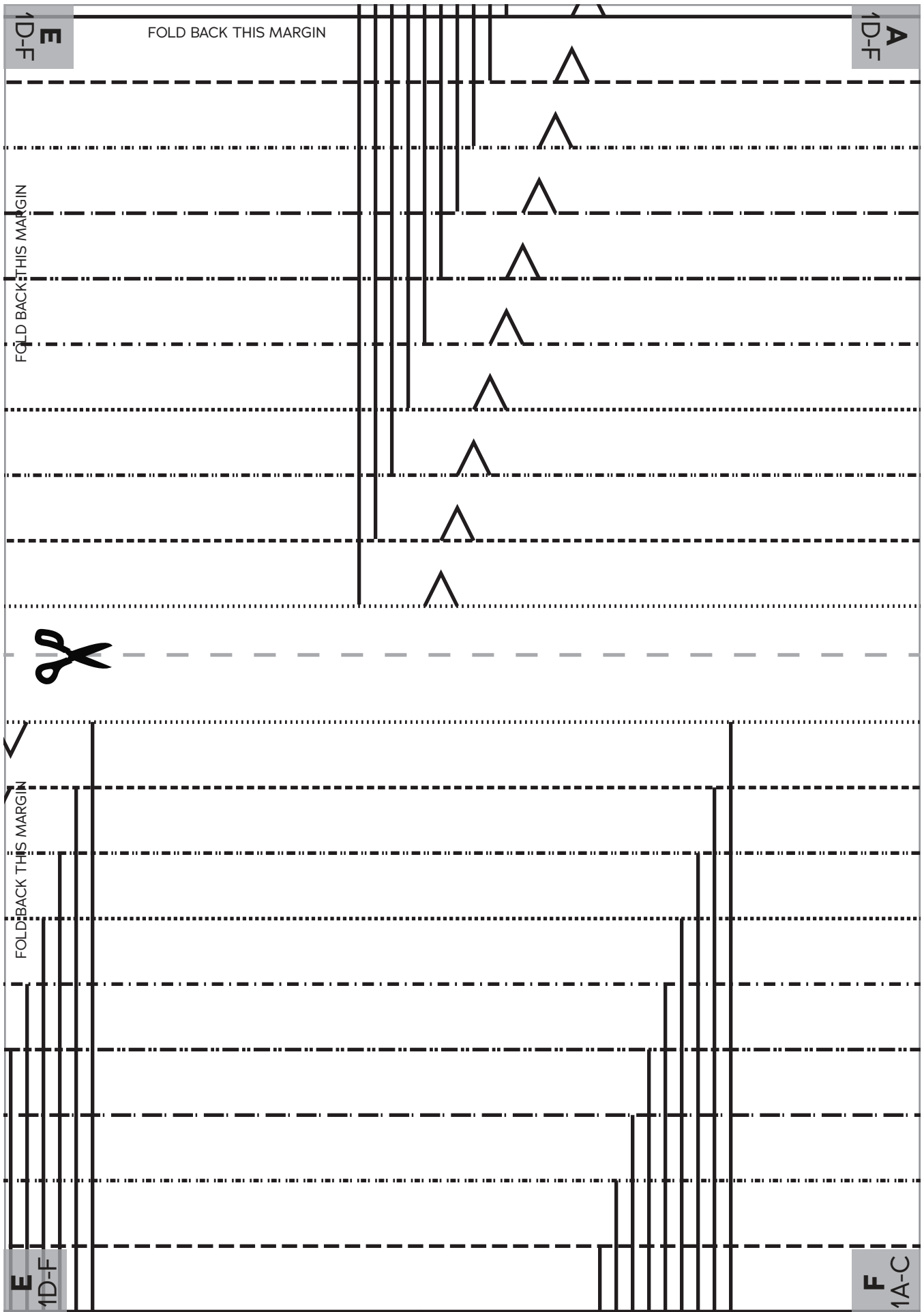
HIP-LENGTH VERSION POCKET

TUNIC-LENGTH VERSION POCKET

FOLD BACK THIS MARGIN

**D**  
1D-F

**E**  
1D-F



FOLD BACK THIS  
MARGIN

10  
12  
14  
16  
18  
20

**E**  
1D-F

FOLD BACK THIS MARGIN

2 ● 4 ● 6 ● 8 ● 10 ● 12 ● 14 ● 16 ● 18 ● 20 ●

TUNIC-LENGTH VERSION POCKET

HIP-LENGTH VERSION CUTTING LINE

2  
4  
6  
8  
10  
12  
14  
16  
18  
20

**F**  
1A-C

TUNIC-LENGTH VERSION CUTTING LINE

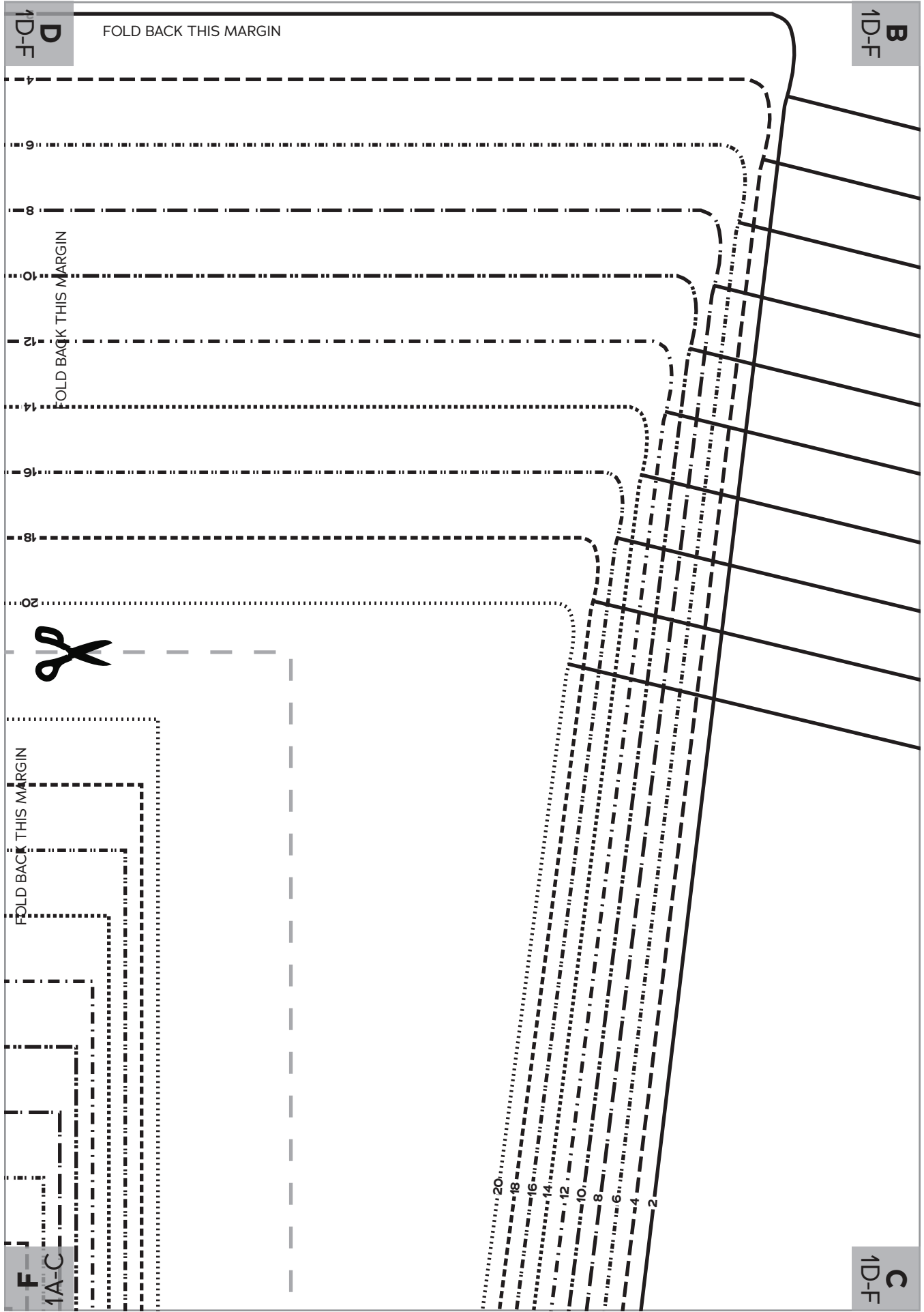
FOLD

- 2
  - 4
  - 6
  - 8
  - 10
  - 12
  - 14
  - 16
  - 18
  - 20
- CROPPED VERSION POCKET

FOLD BACK THIS MARGIN

**D**  
1D-F

**B**  
1D-F



**D**  
1D-F

FOLD BACK THIS MARGIN

**B**  
1D-F

FOLD BACK THIS MARGIN



FOLD BACK THIS MARGIN

**F**  
1A-C

**C**  
1D-F

20  
18  
16  
14  
12  
10  
8  
6  
4  
2

F  
1A-C

2  
4  
6  
8  
10  
12  
14  
16  
18  
20

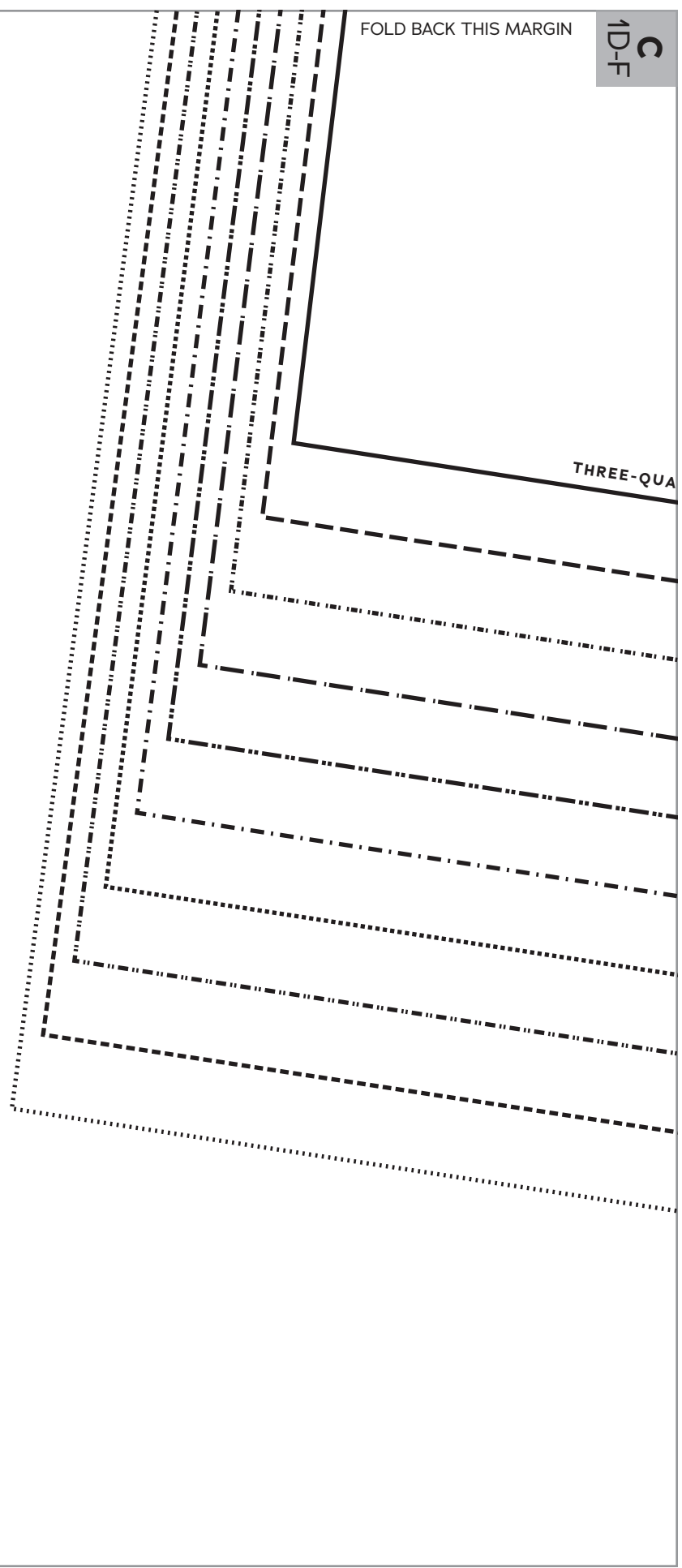
FOLD BACK THIS  
MARGIN

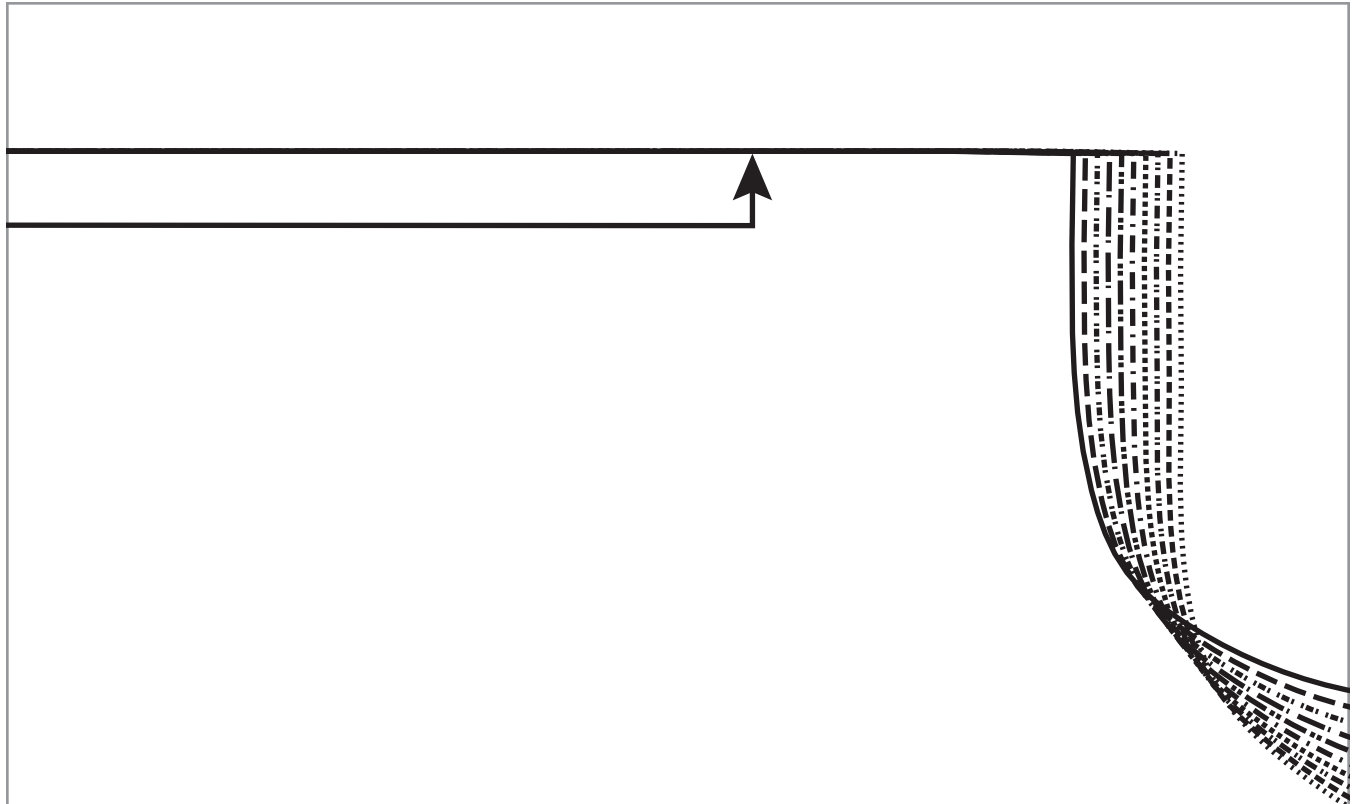


FOLD BACK THIS MARGIN

C  
1D-F

THREE-QUA





**MIDGE  
BRETON  
TOP**

SIZES 2-20



Top  
Front  
D-F Cup  
Cut 1 fabric on fold

FOLD BACK THIS MARGIN

**A**  
1D-F

**B**  
1D-F



FOLD BACK THIS MARGIN

A  
1D-F

B  
1D-F

SHORT SLEEVE AND DROP SHOULDER SLEEVE CUTTING LINE

2

4

6

8

10

12

14

16

18

20

FOLD BACK THIS MARGIN



A  
2

C  
1D-F

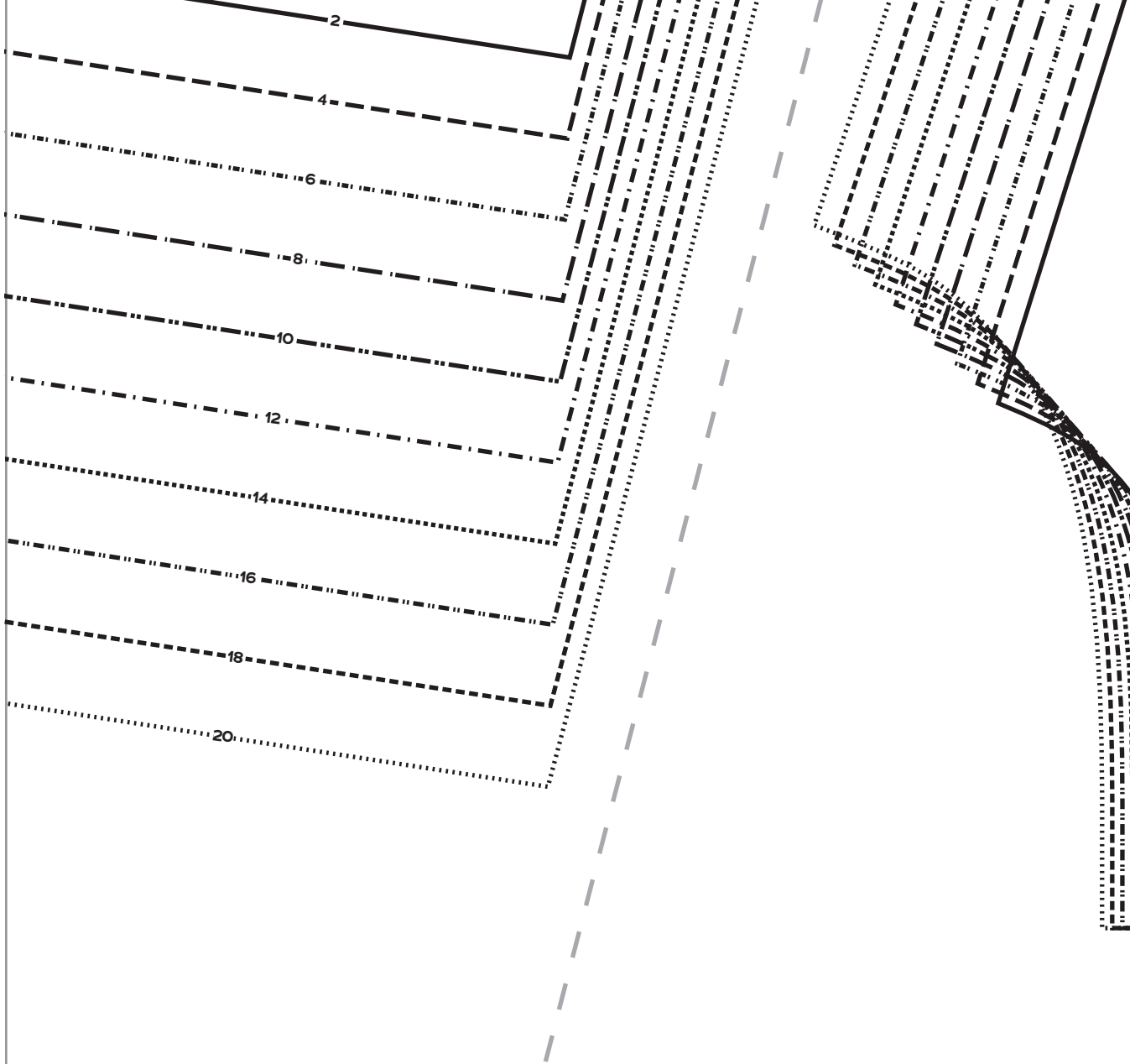
C  
1D-F

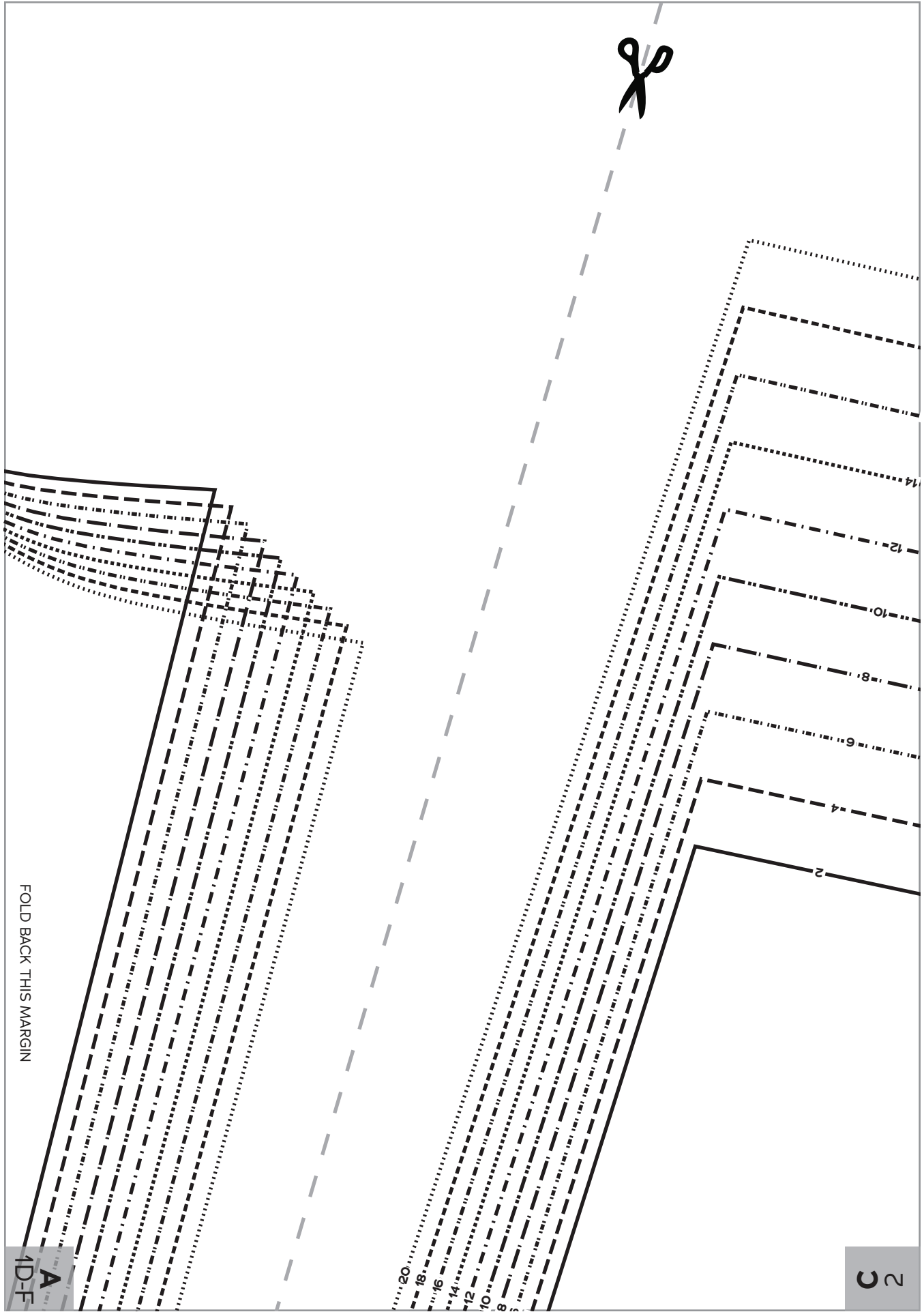
FOLD BACK THIS MARGIN

A  
2

FOLD BACK THIS MARGIN

INNER SLEEVE CUTTING LINE

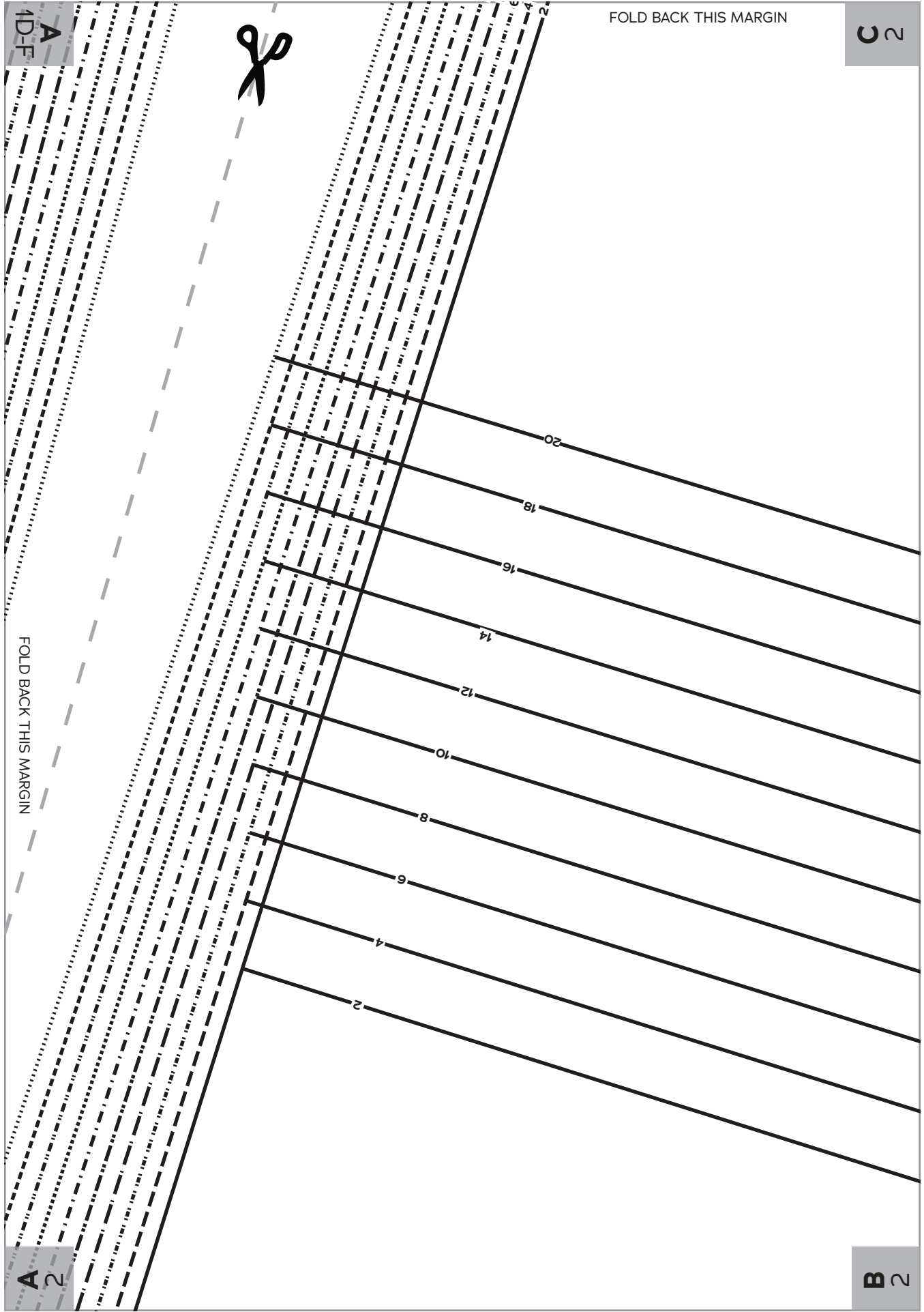




FOLD BACK THIS MARGIN

A  
1D-F

2



FOLD BACK THIS MARGIN

C 2

A 2  
1D-F

FOLD BACK THIS MARGIN

B 2

FOLD BACK THIS MARGIN

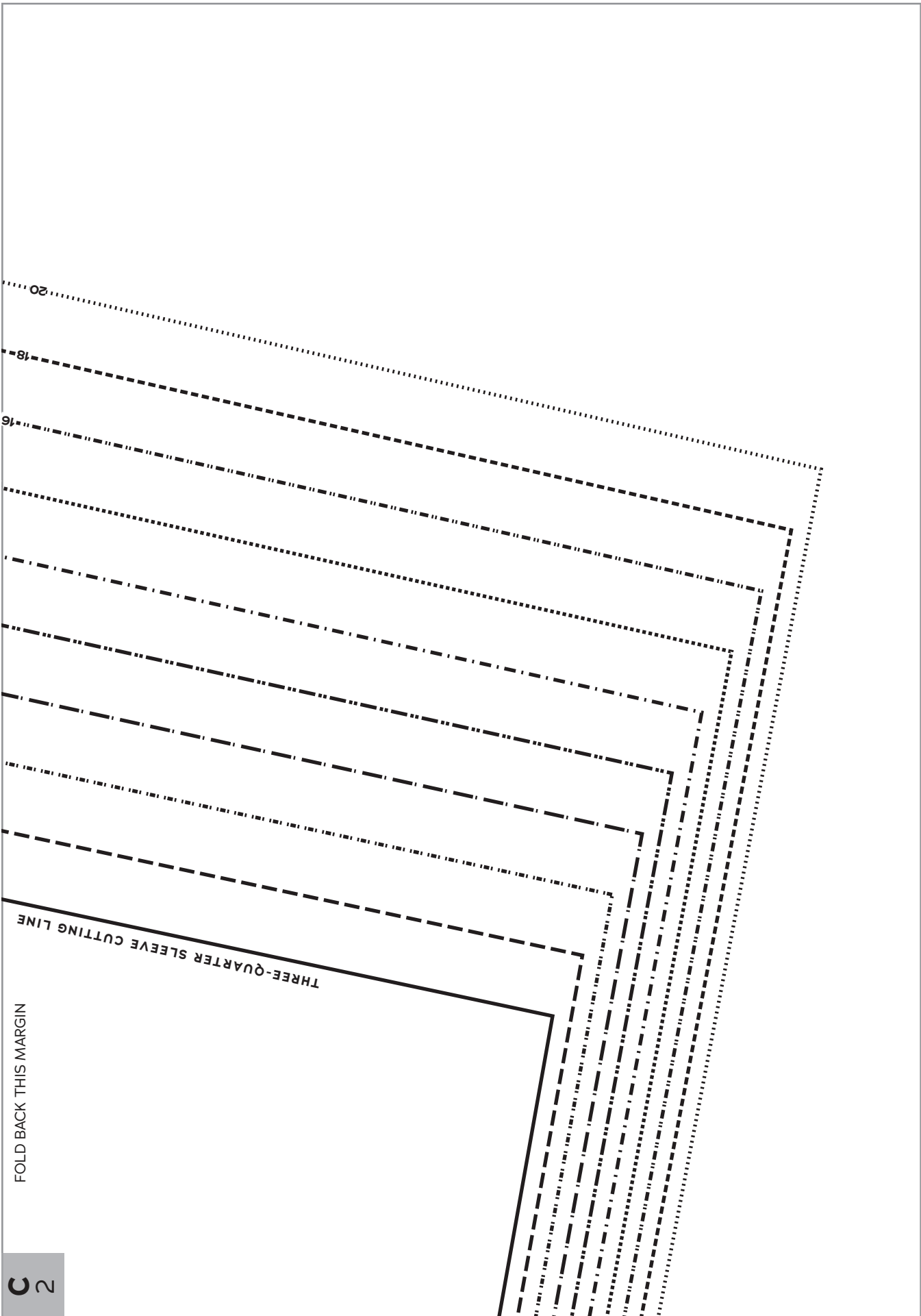
**B 2**

FOLD BACK THIS MARGIN



**MIDGE  
BRETON  
TOP**





FOLD BACK THIS MARGIN

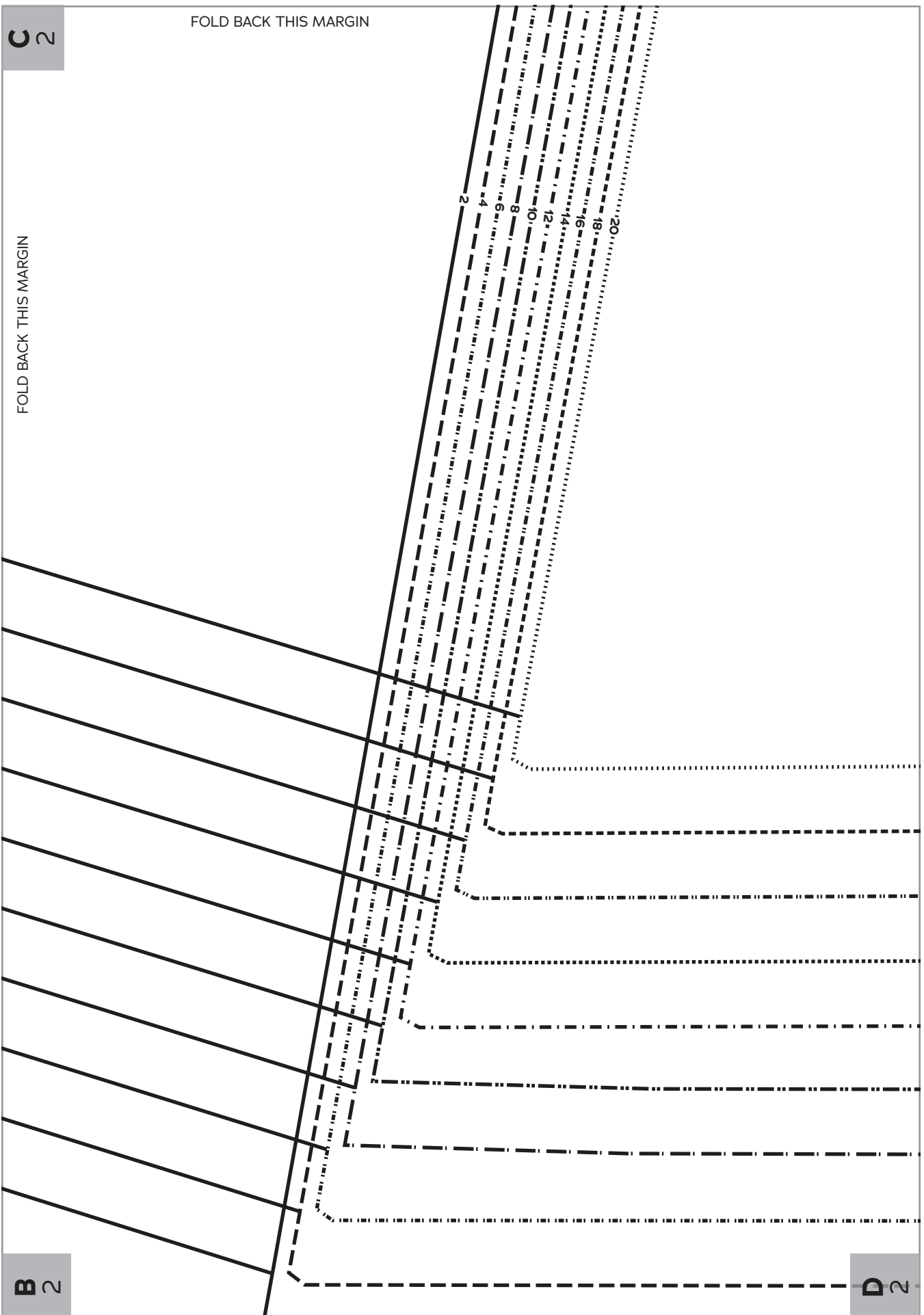
THREE-QUARTER SLEEVE CUTTING LINE

C 2

C 2

FOLD BACK THIS MARGIN

FOLD BACK THIS MARGIN



**B 2**

FOLD BACK THIS MARGIN

**D 2**

SIZES 2-20

**2**

Top Back

Cut 1 fabric on fold

FOLD BACK THIS MARGIN

FOLD



HIP-LENGTH VERSION CUTTING LINE

2  
4  
6  
8  
10  
12  
14  
16  
18  
20

TUNIC-LENGTH VERSION CUTTING LINE

2  
4  
6  
8  
10  
12  
14  
16  
18  
20

FOLD BACK THIS MARGIN

D  
1G-H



20

18

16

14

12

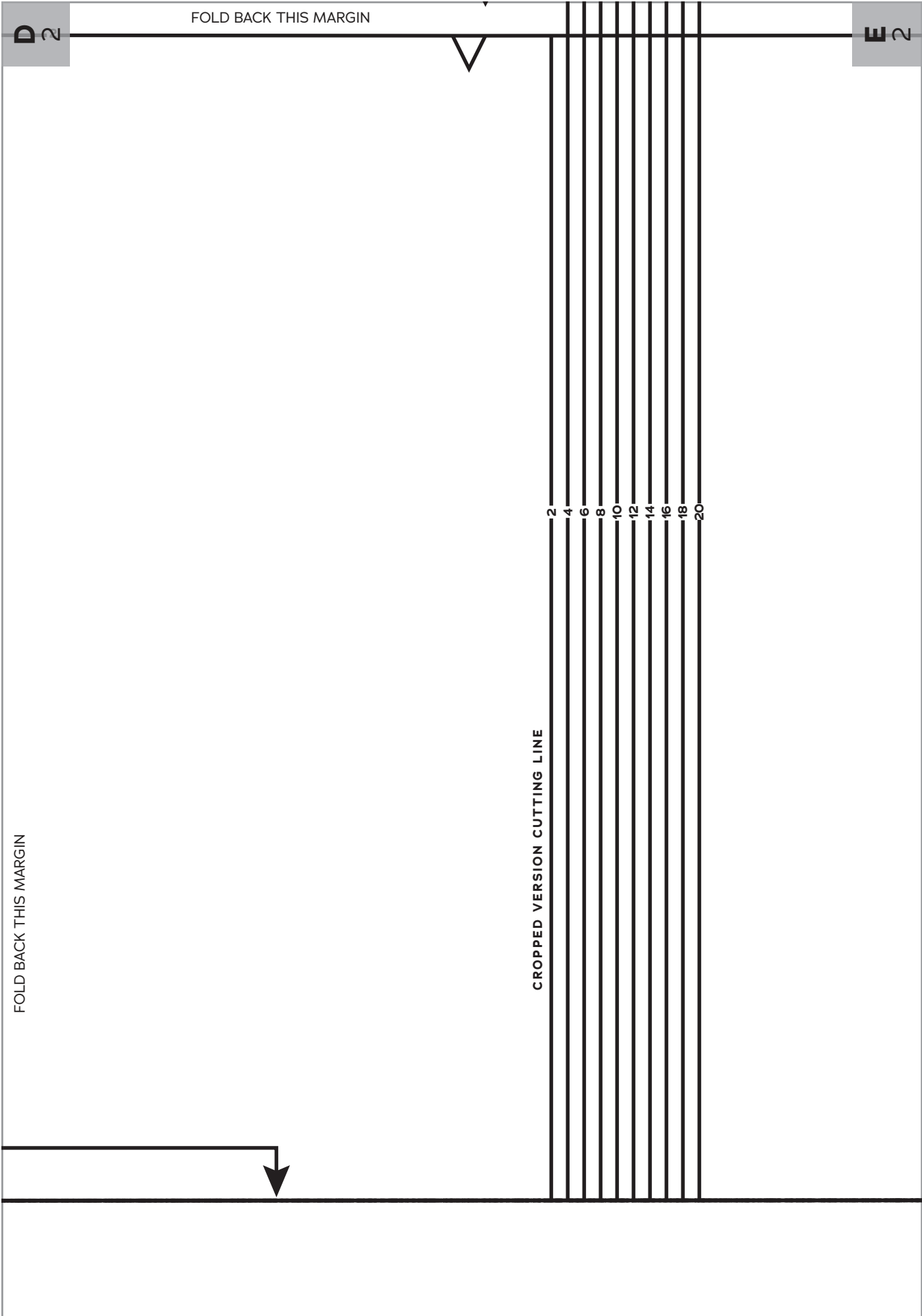
10

8

6

D 2

E 2



C  
1G-H



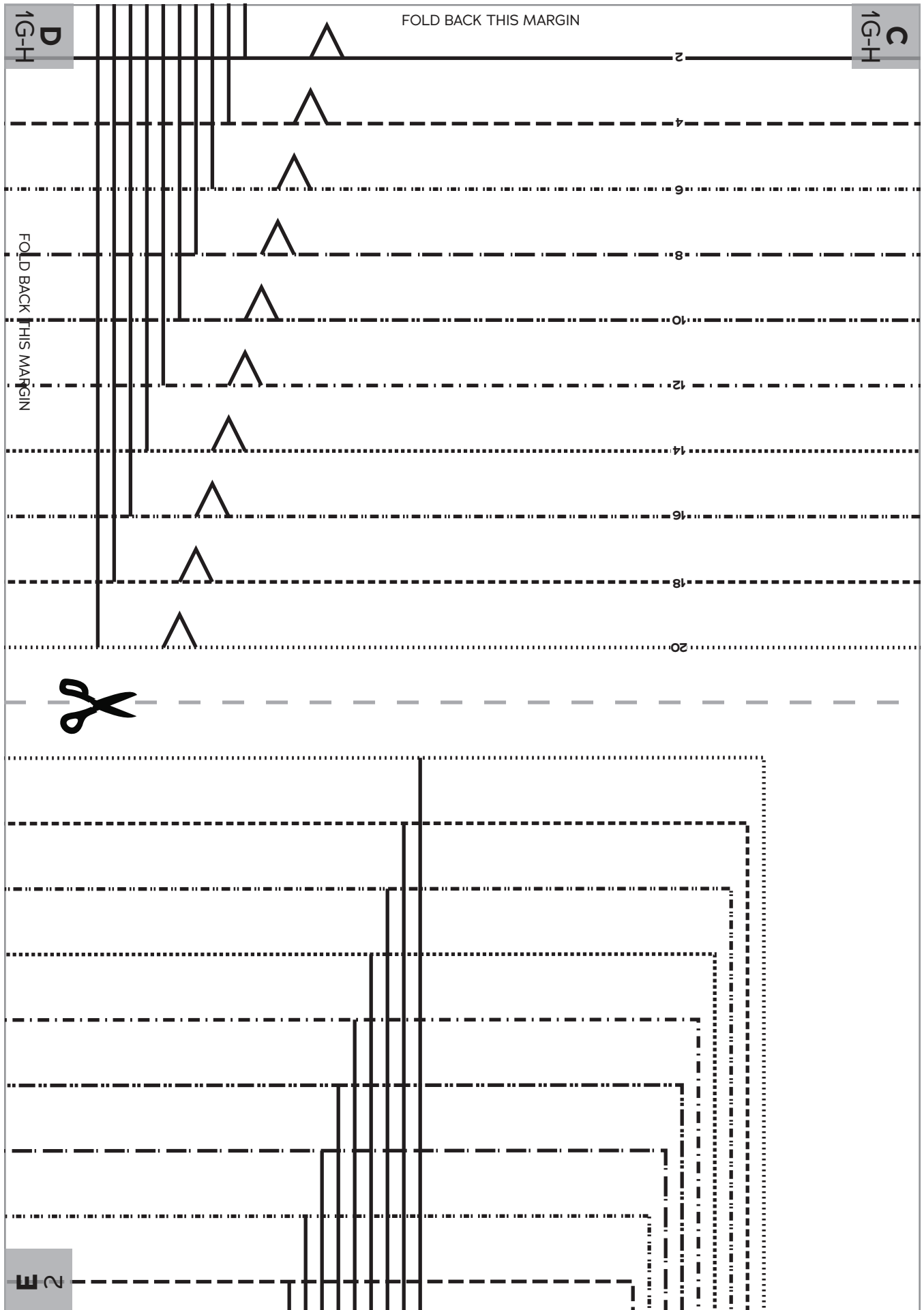
- 2
  - 4
  - 6
  - 8
  - 10
  - 12
  - 14
  - 16
  - 18
  - 20
- HIP-LENGTH VERSION POCKET

CROPPED VERSION CUTTING LINE

- 2
  - 4
  - 6
  - 8
  - 10
  - 12
  - 14
  - 16
  - 18
  - 20
- TUNIC-LENGTH VERSION POCKET

FOLD BACK THIS MARGIN

D  
1G-H



FOLD BACK THIS MARGIN

FOLD BACK THIS MARGIN

HIP-LENGTH VERSION CUTTING LINE

2  
4  
6  
8  
10  
12  
14  
16  
18  
20

TUNIC-LENGTH VERSION CUTTING LINE

2  
4  
6  
8  
10  
12  
14  
16  
18  
20



**MIDGE  
BRETON  
TOP**

SIZES 2-20

**1**

Top  
Front  
G-H Cup  
Cut 1 fabric on fold

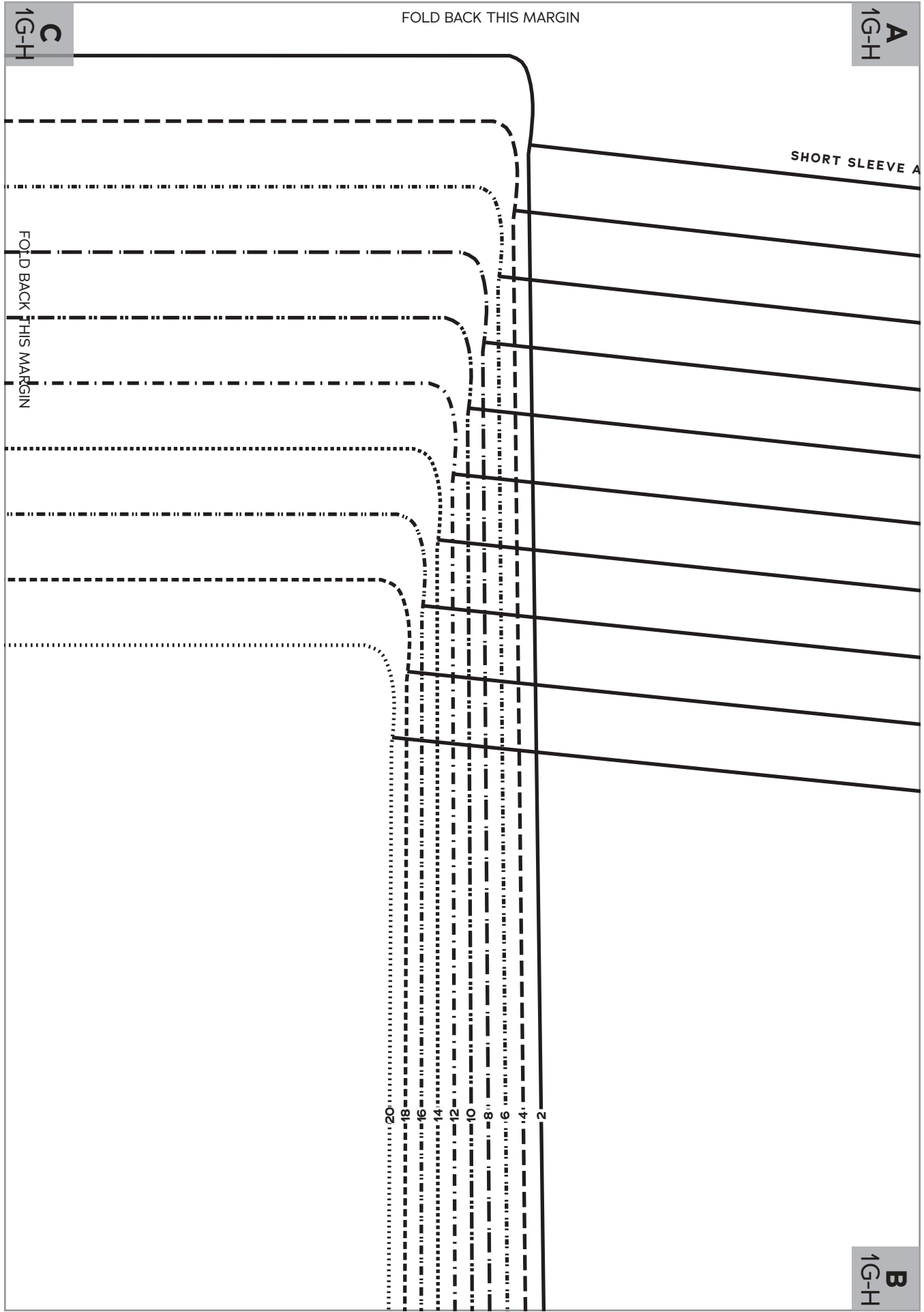
FOLD

FOLD BACK THIS MARGIN

- 2
  - 4
  - 6
  - 8
  - 10
  - 12
  - 14
  - 16
  - 18
  - 20
- CROPPED VERSION POCKET

**A**  
1G-H

**C**  
1G-H

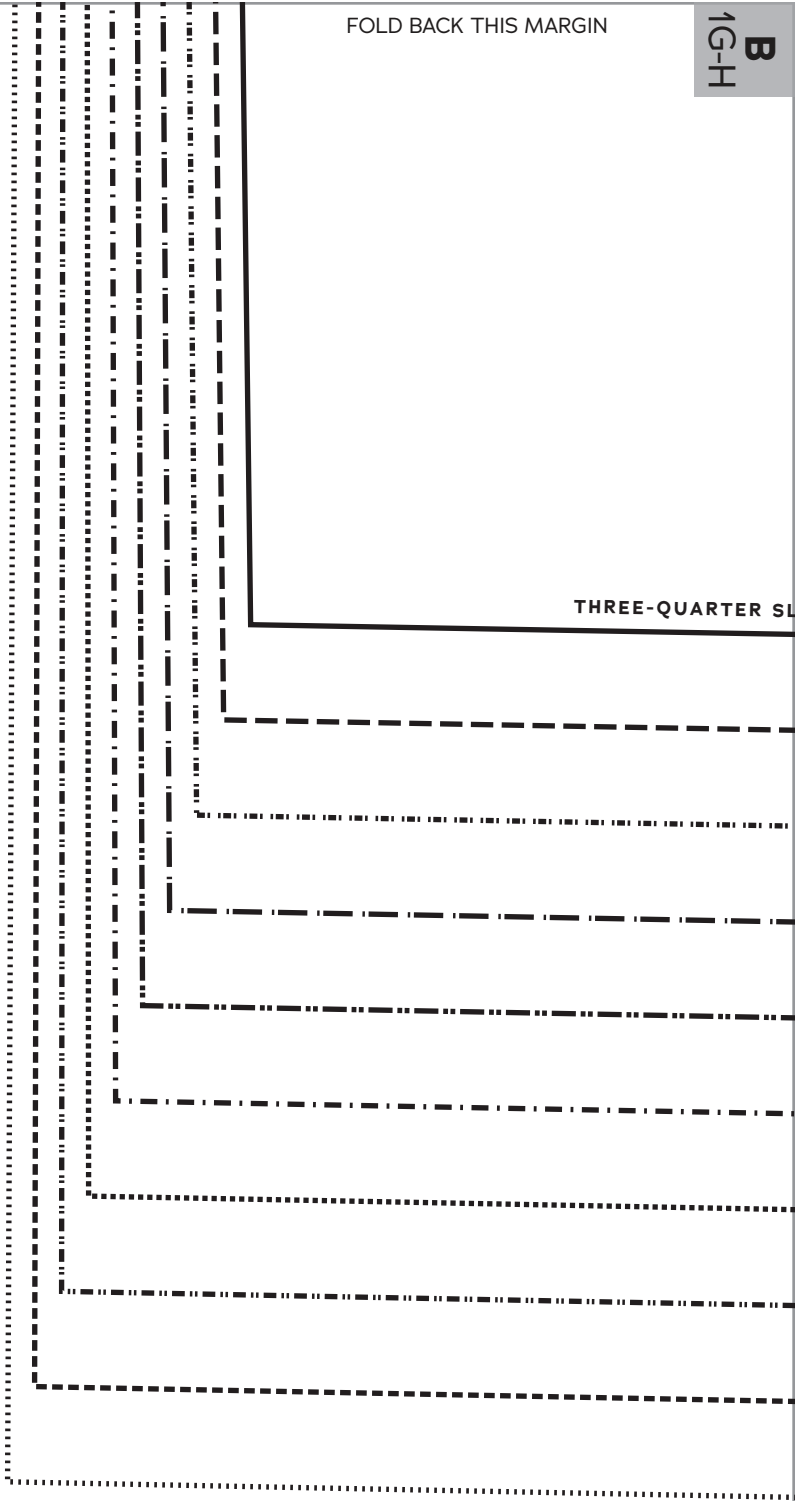


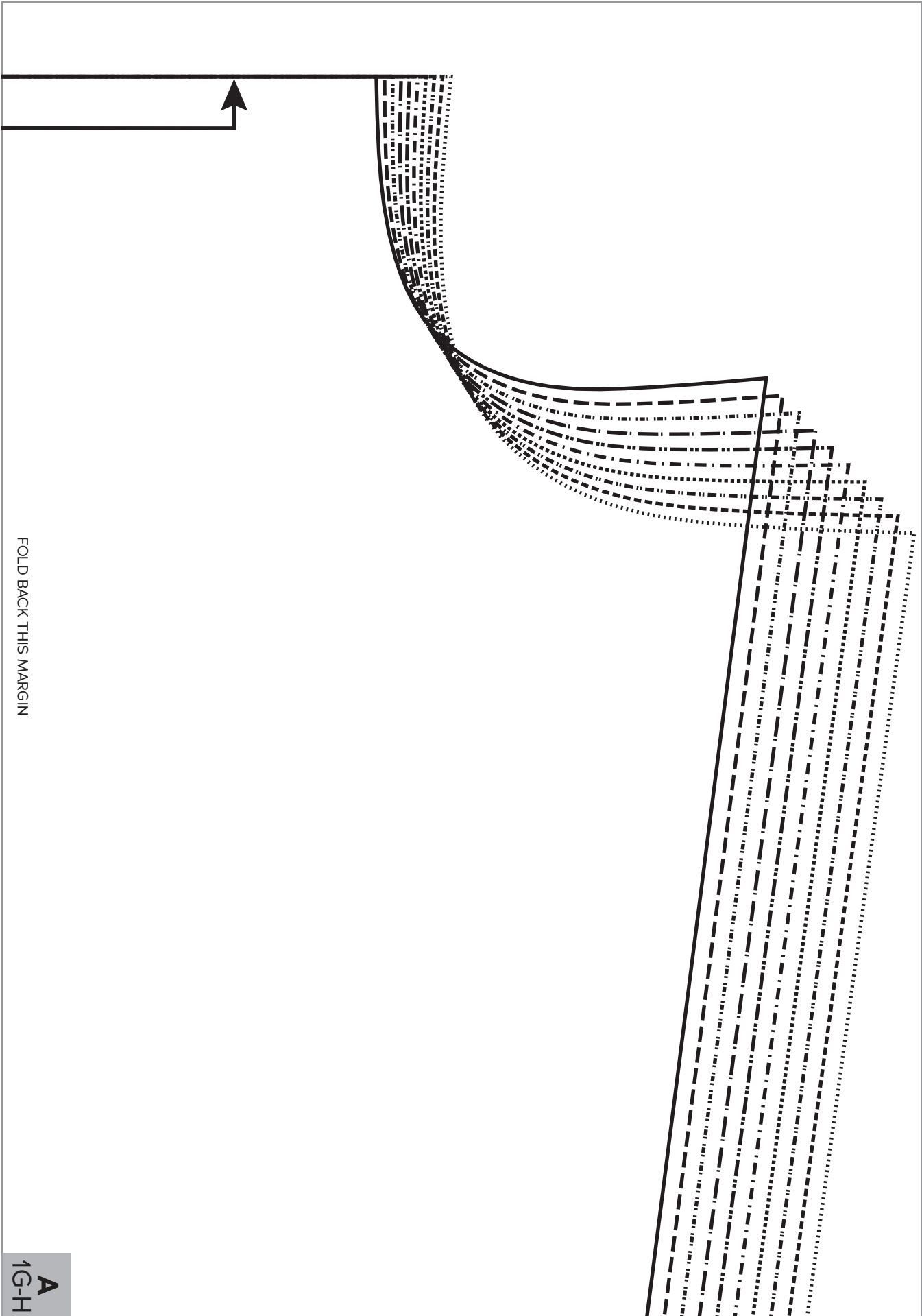


FOLD BACK THIS MARGIN

**B**  
1G-H

THREE-QUARTER SL





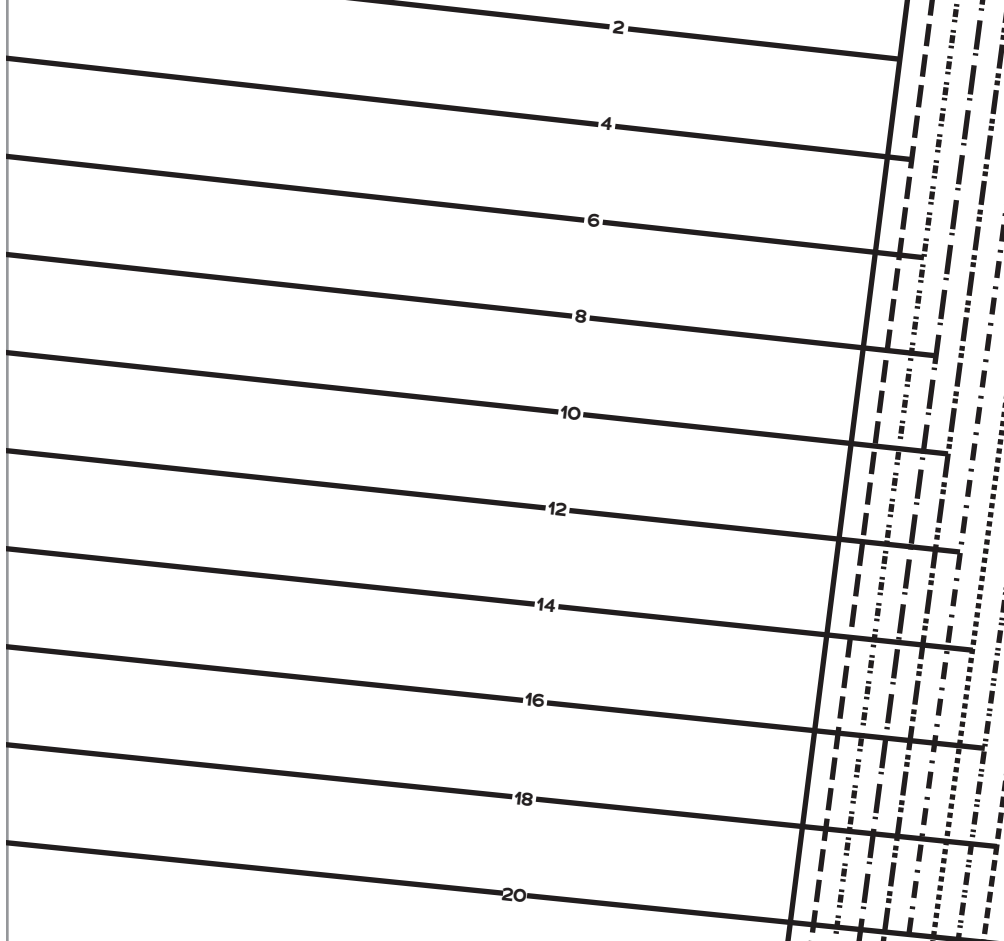
FOLD BACK THIS MARGIN

A  
1G-H

**A**  
1G-H

FOLD BACK THIS MARGIN

NO DROP SHOULDER SLEEVE CUTTING LINE



FOLD BACK THIS MARGIN

**B**  
1G-H

2  
4  
6  
8  
10  
12  
14  
16  
18  
20

**B**  
1G-H

FOLD BACK THIS MARGIN

FOLD BACK THIS MARGIN

NEEVE CUTTING LINE

2

4

6

8

10

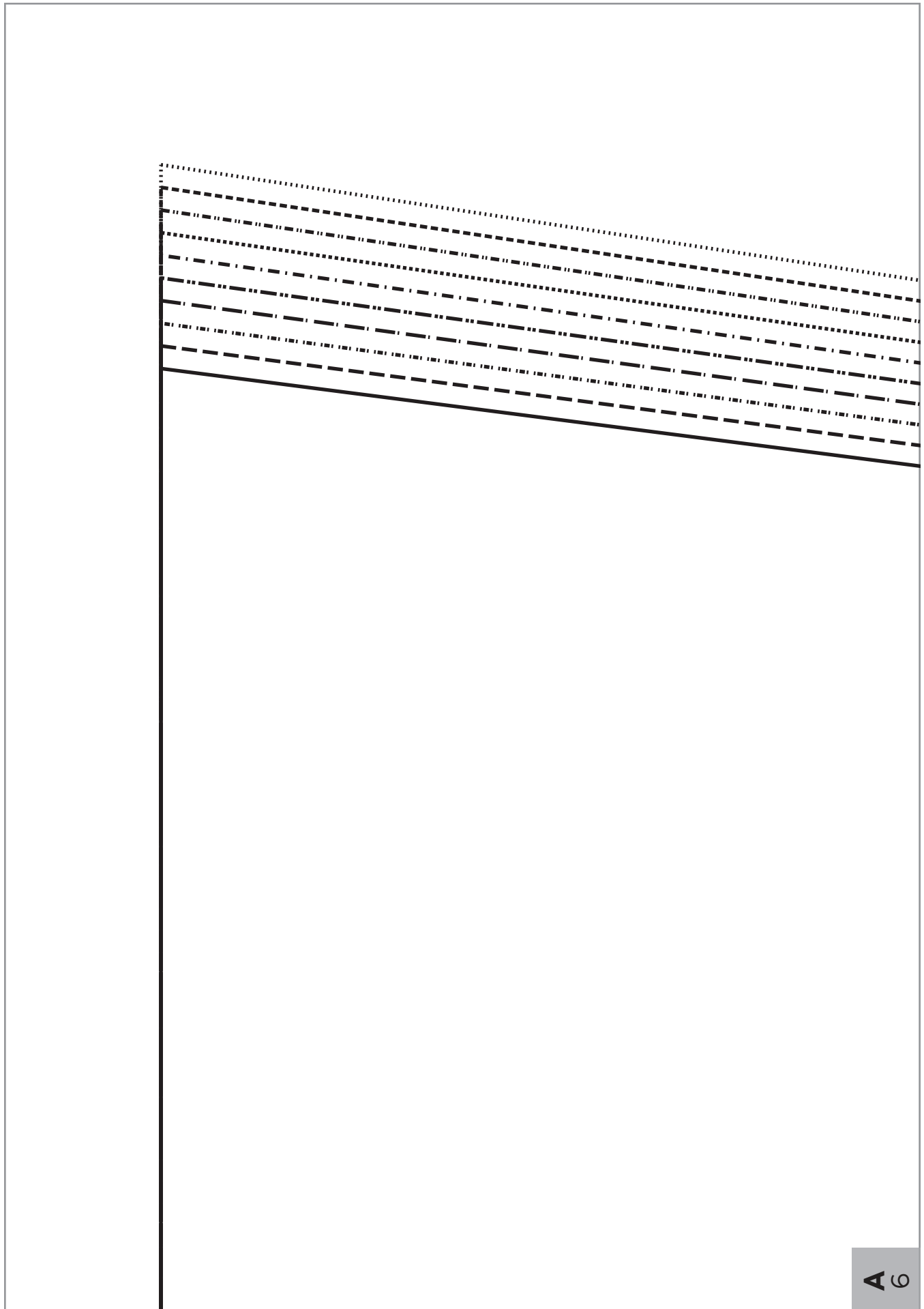
12

14

16

18

20



A 6

FOLD BACK THIS MARGIN



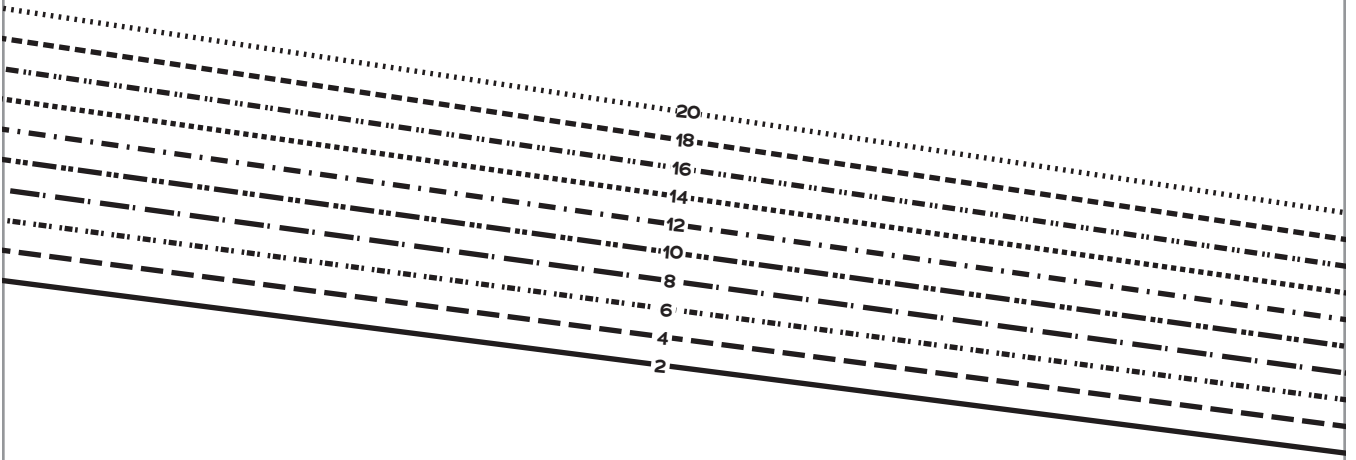
**MIDGE  
BRETON  
TOP**

SIZES 2-20

**6**

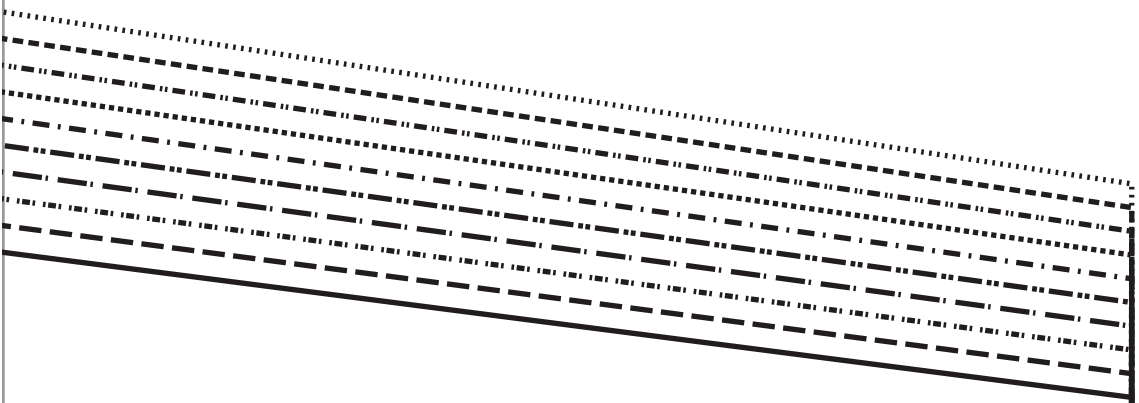
Long Sleeve

Cut 2 fabric



**A** 6

**B** 6

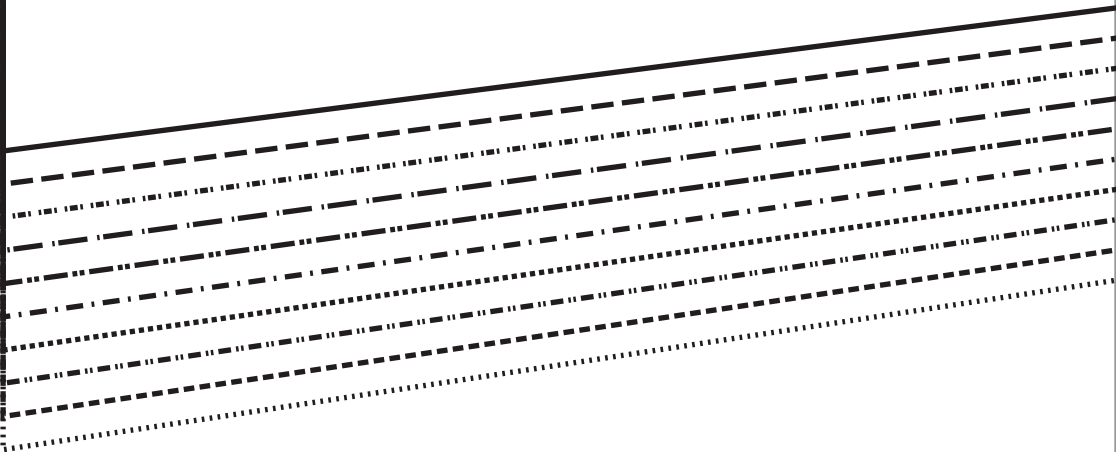


FOLD BACK THIS MARGIN

**B** **G**

FOLD BACK THIS MARGIN

A 6





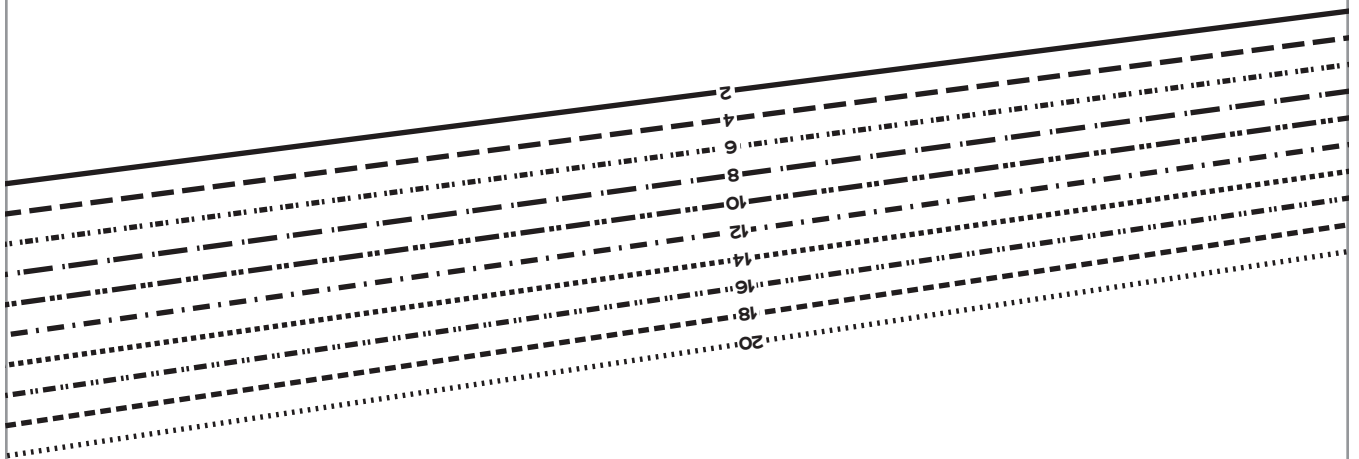
A 6

FOLD BACK THIS MARGIN

B 6

GRAINLINE

FOLD BACK THIS MARGIN

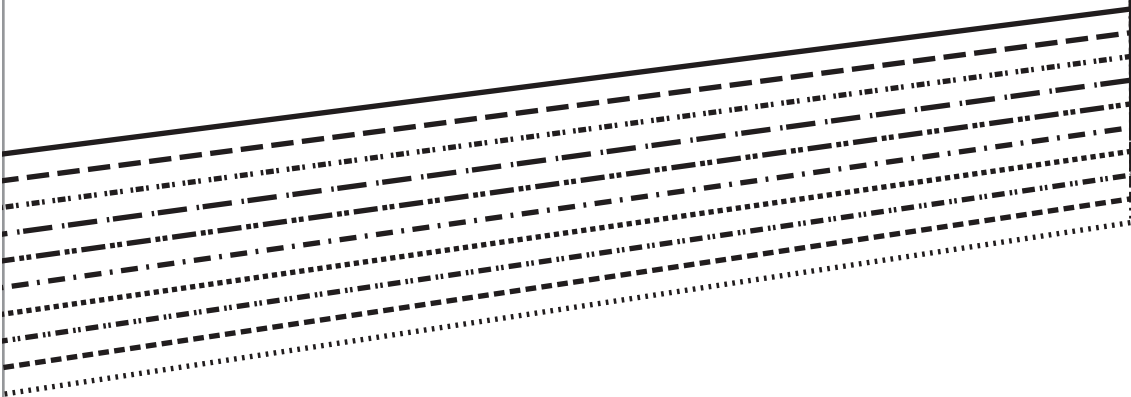


**B** **G**


FOLD BACK THIS MARGIN





FOLD BACK THIS MARGIN






  
 GRAINLINE


  
 BUTTON



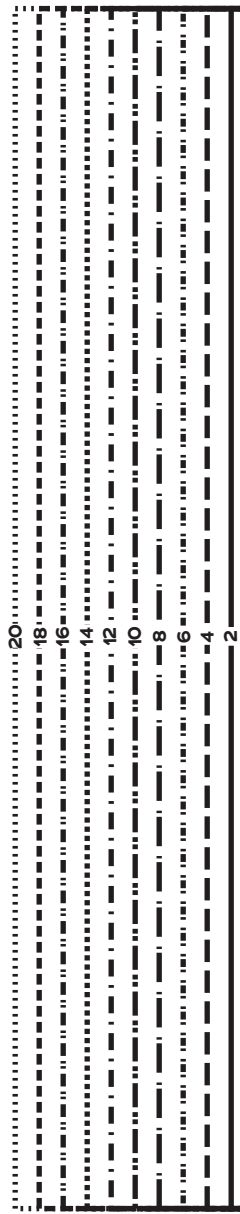
**MIDGE  
BRETON  
TOP**

SIZES 2-20

**4**

Three-Quarter  
Sleeve  
Cuff Tab

Cut 4 fabric



**A**  
3

A  
3



**MIDGE  
BRETON  
TOP**

SIZES 2-20

**3**

Three-Quarter  
Sleeve Cuff

Cut 2 fabric

FOLD BACK THIS MARGIN

2 4 6 8 10 12 14 16 18 20

●  
MATCH TO  
TOP FRONT



**MIDGE  
BRETON  
TOP**

SIZES 2-20

**5**  
Patch  
Pocket

Cut 1 fabric

